

**ASHLAND CITY COUNCIL
BUSINESS MEETING MINUTES
Tuesday, June 2, 2026**

Council Present: Mayor Graham; Councilors Sherrell, Dahle, Bloom, Kaplan, DuQuenne (via Zoom), and Hansen.

Staff Present:

Sabrina Cotta	City Manager
Johan Pietila	City Attorney
Alissa Kolodzinski	City Recorder
Bryn Morrison	Interim Finance Director
Scott Fleury	Public Works Director
Mark Shay	Deputy Fire Chief
Kelly Burns	Emergency Management Coordinator

I. CALL TO ORDER

Graham called the meeting to order at 6:00 p.m.

- a. Land Acknowledgement**

Kaplan read the land acknowledgement.

II. PLEDGE OF ALLEGIANCE

Dahle led the pledge of allegiance.

III. ROLL CALL

IV. MAYOR'S/ CHAIR OF THE COUNCIL ANNOUNCEMENT

- The wildfire mitigation bond discussion was moved to the prior evening's meeting along with the executive session for an annual staff review.
- Juneteenth will be celebrated June 20 at Pear Blossom Park from 11:00 AM to 8:00 PM.
- Residents were reminded of wildfire season and were encouraged to reduce fire risk.
- The Elks Lodge will host a celebration on the plaza at noon on June 14.

- a. *Proclamation in Honor of Flag Day*

Graham read the proclamation into the record

V. APPROVAL OF MINUTES

- a. Minutes of the May 18, 2026 – Study Session Meeting
b. Minutes of the May 19, 2026 – Business Meeting

Kolodzinski noted a corrected version of the May 19 Business Meeting minutes was distributed via email.

Hansen moved to approve the study session minutes from May 18 and the corrected minutes for May 19. Dahle seconded the motion.

Roll Call Vote: Sherrell, Dahle, Bloom, Kaplan, DuQuenne, and Hansen –YES. Motion passed.

VI. CONSENT AGENDA

- a. *Committee Member Appointment*

Dahle moved to approve the consent agenda as listed. Bloom seconded the motion.

Roll Call Vote: Sherrell, Dahle, Bloom, Kaplan, DuQuenne, and Hansen –YES. Motion passed.

VII. SPECIAL PRESENTATIONS

a. *Elks Building Mural Presentation with John Pugh*

Artist John Pugh presented an update on the "Where the Crow Lights" mural, a large-scale public art project planned for the 1910 Elks Lodge building on Main Street. Pugh described the evolution of the design from an earlier concept to a village scene depicting indigenous life, incorporating imagery of local animals, plants, and creation stories. He emphasized that the design had been developed through extensive consultation with native elders and community members and that feedback had been consistently positive. Installation is planned to begin at the end of July. Fundraising has reached approximately \$205,000 of the \$250,000 goal, with approximately \$45,000 still needed. Community members wishing to donate may do so at wherethecrowlights.org.

Council members expressed broad enthusiasm and appreciation, noting the care taken to respectfully represent indigenous heritage and acknowledged that inclusive community engagement had been a condition of the Council's early support for the project.

VIII. PUBLIC FORUM

Concerns were raised regarding the previous year's budget amendment process due to a perceived conflict of interest. Community members encouraged restoration of hospital services at Ashland Community Hospital and requested the safeguarding of funds acquired from a breach of contract agreement to be reserved for this while efforts are made to bring back these services. The absence of a search for a new Finance Director was questioned, and concerns were raised about the accuracy of data related to an upcoming herbicide application.

IX. PUBLIC HEARING

a. *Public Hearing for Approval of a Resolution to Levy Taxes for the Fiscal Year July 1, 2026 through June 30, 2027, a Resolution Certifying City of Ashland Services, a Resolution Declaring the City's Election to Receive State Revenues*

Morrison presented three resolutions required annually to authorize the property tax levy and state revenue sharing. The proposed levy rate is \$4.2865 per \$1,000 of assessed value, plus a general obligation bond levy of \$202,774 for repayment of Fire Station 2 debt. The remaining two resolutions certify that the City provides qualifying services and elects to receive state revenue sharing.

Public Hearing open

No speakers

Public Hearing Closed

Bloom moved to approve a Resolution levying taxes for the fiscal year July 1, 2026 through June 30, 2027, such taxes in the levy rate of \$4.2865 per \$1,000 of assessed value upon all the real and personal property subject to assessment and levy within the corporate limits of the City of Ashland, Jackson County, Oregon; and the City Council also levies a tax for the repayment of general obligation debt in the amount of \$202,774; and to approve a resolution certifying City of Ashland services; and to approve a resolution declaring the City's election to receive state revenues. Dahle seconded the motion.

Roll Call Vote: Dahle, Bloom, Sherrell, Kaplan, DuQuenne, and Hansen –YES. Motion passed.

X. ORDINANCES, RESOLUTIONS AND CONTRACTS

a. *Second Reading of the following Ordinance Language Changes (Set #3):*

- i. 3299 AN ORDINANCE AMENDING AMC 13.04 CONSTRUCTION, REPAIR AND ALTERATION OF SIDEWALKS, SECTION 13.04.020 DUTY TO REPAIR AND CLEAR SIDEWALKS
- ii. 3300 AN ORDINANCE AMENDING AMC SECTION 14.04.060 WATER CONNECTS OUTSIDE THE CITY LIMITS
- iii. 3301 AN ORDINANCE AMENDING AMC 14.08 SEWER SYSTEM - RATES, SECTION 14.08.030 CONNECTION OUTSIDE CITY, INSIDE URBAN GROWTH BOUNDARY AND SECTION 14.08.031 CONNECTION OUTSIDE URBAN GROWTH BOUNDARY
- iv. 3302 AN ORDINANCE RELATING TO WASTEWATER REGULATIONS AMENDING AMC 14.09 TO INCLUDE SECTION 14.09.030 & 14.09.040
- v. 3303 AN ORDINANCE AMENDING AMC 15.04 BUILDINGS AND CONSTRUCTION, SECTION 15.04.210 DEMOLITION OR RELOCATION OF STRUCTURE
- vi. 3304 AN ORDINANCE AMENDING AMC 15.28 FIRE PREVENTION CODE

Pietila presented six ordinances for second reading, noting minor corrections since first reading:

- **Ordinance 3299:** A typographical error ("AMNC" corrected to "AMC") was the only change.
- **Ordinance 3300:** No textual changes; links to the irrevocable consent to annexation template on the city website were added per Council's prior request.
- **Ordinance 3301:** An apostrophe was added to "director's"
- **Ordinances 3302, 3304:** No changes from first reading.
- **Ordinance 3303:** No changes from first reading; addressed separately due to anticipated split vote.

Bloom moved to approve the following ordinances: 3299, 3300, 3301, 3302, and 3304 as amended.

Dahle seconded the motion.

Roll Call Vote: Dahle, Bloom, Sherrell, Kaplan, DuQuenne, and Hansen -YES. Motion passed.

Dahle moved to approve 3303, An Ordinance Amending AMC 15.04 Buildings and Construction, Section 15.04.210 Demolition or Relocation of Structure. Hansen seconded the motion.

Roll Call Vote: Dahle, Sherrell, Kaplan, and Hansen -YES. Bloom and DuQuenne - NO. Motion passed.

b. *Resolution 2026-12 Ratifying the Drought Emergency Declaration for the City of Ashland*

Cotta explained that the Governor and Jackson County have both declared a drought emergency, and that a City declaration would enable better coordination with county and state agencies to expedite access to emergency resources if needed. It was clarified that the declaration does not indicate an immediate emergency but positions the City to act quickly if conditions worsen. Cotta noted that the city's primary water supply is snowmelt dependent. Despite recent rainfall, the lack of adequate snowpack means the drought concern remains serious. Approximately \$1.8 million in emergency reserve funds are currently available if needed. Council discussed the importance of public messaging around water conservation and the potential for an extended drought season.

Dahle moved to approve Resolution 2026-12, A Resolution Ratifying the City Manager's State of

Emergency Declaration. Bloom seconded the motion.

Roll Call Vote: Sherrell, Dahle, Bloom, Kaplan, DuQuenne, and Hansen –YES. Motion passed.

XI. UNFINISHED BUSINESS

a. Wastewater and Storm Drain Rate Study Acceptance

Fleury and consultant Josiah Close with HDR Engineering presented the findings of the Wastewater and Storm Drain Rate Study (see attached). Wastewater rates have not been increased since 2019; storm drain rates have not increased since 2021. The study used industry-standard methodology consistent with the Water Environment Federation Manual.

Wastewater: The study projects approximately \$18.8 million of capital needs through fiscal year 2031, including significant investment in the treatment plant headworks and the Hardesty site. The analysis recommends rate-funded capital of approximately \$650,000 per year, supplemented by long-term borrowing for larger projects. A new equipment reserve deposit of \$100,000 per year beginning in FY2028 was proposed. The residential monthly bill for a customer using 400 cubic feet would increase from \$33.94 to \$37.48 in FY2027. Multifamily rates would be held flat in year one and then set at 90% of the residential charge in subsequent years, reflecting cost-of-service analysis. Operating reserves are targeted at 90 days of O&M (Operations & Maintenance) expenses.

Storm Drain: The study projects approximately \$3.5 million in capital needs through 2037, with an equipment reserve deposit of \$25,000 beginning in FY2028. A franchise fee contribution to the general fund, consistent with other enterprise funds, is being added beginning in FY2027. The residential equivalent rate would increase from \$5.43 to \$6.43 per month in FY2027.

Council discussion addressed the adequacy of the 90-day operating reserve target, the risk of economic downturns affecting receivables, the distinction between SDC (System Development Charges) funds and operating reserves, and whether sharing equipment across enterprise funds could improve cost efficiency. Fleury noted that if rates were not raised, the primary offset would be deferred capital projects, which could result in continued localized flooding in areas such as North Mountain and Siskiyou Boulevard. Councilors discussed cumulative cost burdens on ratepayers, that potential proceeds from a Hardesty property sale could be earmarked, and their responsibility to consider such rate increases. It was noted that Council retains authority over individual rate increases and capital projects as they come forward.

Dahle moved to accept the Wastewater and Storm Drain Rate Study developed by HDR Engineering. Hansen seconded the motion.

Roll Call Vote: Sherrell, Dahle, Bloom, Kaplan, and Hansen –YES. DuQuenne – NO. Motion passed.

A brief recess was taken.

XII. NEW BUSINESS

Note: Graham announced a change in the agenda order – Wildfire Readiness 2026 will go first.

a. Wildfire Readiness 2026 Fire Season

Shay and Burns provided a presentation with a comprehensive overview of the City's wildfire preparedness (see attached).

Shay spoke about Fire Department activities that had been performed. Staff conducted wildfire hardening assessments for Ashland School District structures and engaged around 1,000 citizens in educational initiatives, including Firewise presentations, HOA outreach, air cleaner workshops, and a webinar with the Insurance Institute for Business and Home Safety. The annual green debris drop-off, in partnership with Recology, cleared 120 cubic yards of yard debris, while the Northwest Youth Corps performed mitigation in March and April, treating 15 acres of land and protecting 259 homes at no cost. Within the municipal watershed, 73 piles were burned (about 15 tons of fuel), 100 acres seeded, and 3,200 pine trees planted. They secured a \$185,000 grant for prescribed burning in FY2027-2028. Drones identified eight illegal campsites, resolved with local police. Weed abatement efforts opened 72 cases this season, affecting roughly 50 acres; four cases are advancing towards citation or abatement.

Burns spoke about activities related to Emergency Management. The October 2025 evacuation drill saw participation from Latinx and Ukrainian communities; data from this event is still being analyzed. Residents are advised to download the Genesys Protect app for updated evacuation zones and Jackson Alerts for notifications, and to sign up for county alerts via texting "JACKSONEVACS" to 888777. The CERT (Community Emergency Response Team) program holds monthly training sessions at Fire Station 2 and includes a "Better Prepared Neighborhoods" curriculum. A CERT academy is scheduled for September 2026. An exercise simulating a dam failure, involving Council members, is planned for October 2026. Due to low snowpack and drought conditions, the 2026 wildfire season could be as severe as 2015. Residents are urged to prepare their go-bags, learn evacuation routes, and consider early evacuation based on personal risk profiles.

During council discussion, questions were raised about city protocols like Pacific Power's safety power shutdowns during wind events and risk evaluations for individuals and families regarding evacuation. Assurance was given that mitigation strategies are being addressed without matching Pacific Power's type of shutdown. Additionally, it was explained that residents should make personalized emergency plans, noting that it is appropriate for individuals to act based on their own risk tolerance and to evacuate sooner rather than depending solely on official evacuation levels. Confidence was expressed in the work of the city's preparedness staff, acknowledging the proactive efforts to equip residents with necessary tools and information.

b. North Mountain Property Surplus

Fleury provided a presentation (see attached). This is a one-third-acre parcel located off East Nevada Street, zoned North Mountain Multifamily, with a development potential of approximately 4.2 units. The parcel was originally granted to the City by Jackson County at no cost in the 1990s. A 2021 appraisal valued the bare land at \$300,000. Staff confirmed the property has no current or planned city use and recommended formal surplus designation, which would enable staff to proceed with a public hearing

and potential listing through a real estate agent. Council discussion confirmed that the destination of sale proceeds would be addressed at a future meeting following legal and policy research, and that the public hearing process would allow Council to reconsider before any sale is finalized.

Bloom moved to surplus Tax Lot #100 from Assessor Map 391E04AD. Sherrell seconded the motion. Roll Call Vote: Sherrell, Dahle, Bloom, Kaplan, DuQuenne, and Hansen –YES. Motion passed.

c. Hardesty Property Surplus

Fleury continued his presentation (see attached). The Hardesty property consists of two tax lots (400 and 402) purchased in 2018 by the Streets, Water, Wastewater, and Fire funds for a future operations yard, equipment storage, and a potential wetland cooling treatment area for the wastewater plant. Tax Lot 402 is approximately 5 acres and includes a 2,000-square-foot house and outbuildings, appraised at \$685,000 in 2021. Tax Lot 400 is a larger parcel; the area south of Bear Creek is being retained for the future public works yard, while the area north of Bear Creek is no longer needed for city purposes. The water right associated with the property is attached to Tax Lot 400. Staff recommended the surplus of Tax Lot 402 in its entirety and the northern portion of Tax Lot 400, with a boundary line adjustment along the center line of Bear Creek to be pursued through Jackson County.

Council discussion centered on the complexity of whether to pursue a boundary line adjustment or a subdivision for the Hardesty property, each with different implications and processes at the county level. This raised questions about the proper sequencing of the surplus declaration versus undergoing the county's processes and the potential impact on property value and sale flexibility. Concerns were expressed about ensuring the property would achieve the highest and best use, considering the options of subdividing versus adjusting boundaries. After extensive discussion and amendments, the following motion was adopted:

Hansen moved to surplus the Hardesty Property Tax Lots 402 and 400. Kaplan seconded the motion. Roll Call Vote: Dahle, Bloom, Kaplan, DuQuenne, Sherrell, and Hansen –YES. Motion passed.

CITY MANAGER REPORT – This was not discussed due to time constraints.

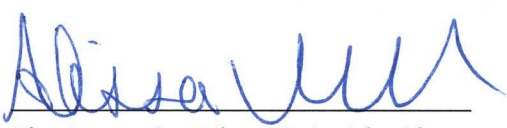
- d. Look Ahead*
- e. June City Manager Report*

XIII. OTHER BUSINESS FROM COUNCIL MEMBERS/REPORTS FROM COUNCIL LIAISONS

XIV. ADJOURNMENT

Bloom moved to adjourn. Seconded by Hansen. All Ayes. Motion passed.

The meeting was adjourned at 9:38 p.m.



City Recorder Alissa Kolodzinski



Mayor Tonya Graham



SPEAKER REQUEST FORM

Submit this form to the meeting Secretary prior to the discussion item.

- 1) You will be called forward when it is your turn to speak
- 2) State your name and speak clearly into the microphone
- 3) Limit your comments to the time allotted
- 4) Provide any written materials to the meeting Secretary
- 5) Speakers are solely responsible for the content of their statement

Date: June 2, 2026

Name: (Please Print)
Paul Mozina

Ashland Resident:
 YES NO City: _____

Agenda Topic/Item Number:

Public Forum Topic (Non-agenda Item):
2025-2027 Biennial Budget

Please respect the order of proceedings and strictly follow the directions of the presiding officer. Behavior or actions which are loud or disruptive are disrespectful and offenders will be requested to leave.

Disclaimer: By submitting this request to address the Public Body, I agree that I will refrain from the use of any obscene, vulgar, or profane language. I understand that if I do not follow procedure my speaking time may be terminated, and I may be requested to sit down or leave the building.



SPEAKER REQUEST FORM

Submit this form to the meeting Secretary prior to the discussion item.

- 1) You will be called forward when it is your turn to speak
- 2) State your name and speak clearly into the microphone
- 3) Limit your comments to the time allotted
- 4) Provide any written materials to the meeting Secretary
- 5) Speakers are solely responsible for the content of their statement

Date: 6/3/26

Name: (Please Print)
Suzanne Haveman

Ashland Resident:
 YES NO City: Ashland

Agenda Topic/Item Number:

Public Forum Topic (Non-agenda Item):
The Hospital

Please respect the order of proceedings and strictly follow the directions of the presiding officer. Behavior or actions which are loud or disruptive are disrespectful and offenders will be requested to leave.

Disclaimer: By submitting this request to address the Public Body, I agree that I will refrain from the use of any obscene, vulgar, or profane language. I understand that if I do not follow procedure my speaking time may be terminated, and I may be requested to sit down or leave the building.



Better Together

SPEAKER REQUEST FORM

Submit this form to the meeting Secretary prior to the discussion item.

- 1) You will be called forward when it is your turn to speak
- 2) State your name and speak clearly into the microphone
- 3) Limit your comments to the time allotted
- 4) Provide any written materials to the meeting Secretary
- 5) Speakers are solely responsible for the content of their statement

Date:

6/2/26

Name: (Please Print)

Lauri Hoagland

Ashland Resident:

YES NO City: _____

Agenda Topic/Item Number:

Public Forum

Public Forum Topic (Non-agenda Item):

Ashland Community Hospital

Please respect the order of proceedings and strictly follow the directions of the presiding officer. Behavior or actions which are loud or disruptive are disrespectful and offenders will be requested to leave.

Disclaimer: By submitting this request to address the Public Body, I agree that I will refrain from the use of any obscene, vulgar, or profane language. I understand that if I do not follow procedure my speaking time may be terminated, and I may be requested to sit down or leave the building.



SPEAKER REQUEST FORM

Submit this form to the meeting Secretary prior to the discussion item.

- 1) You will be called forward when it is your turn to speak
- 2) State your name and speak clearly into the microphone
- 3) Limit your comments to the time allotted
- 4) Provide any written materials to the meeting Secretary
- 5) Speakers are solely responsible for the content of their statement

Date: 06-02-2026

Name: (Please Print)
Barbara Cooper

Ashland Resident:
 YES NO City: _____

Agenda Topic/Item Number:
Ashland Hospital

Public Forum Topic (Non-agenda Item):

Please respect the order of proceedings and strictly follow the directions of the presiding officer. Behavior or actions which are loud or disruptive are disrespectful and offenders will be requested to leave.

Disclaimer: By submitting this request to address the Public Body, I agree that I will refrain from the use of any obscene, vulgar, or profane language. I understand that if I do not follow procedure my speaking time may be terminated, and I may be requested to sit down or leave the building.



SPEAKER REQUEST FORM

Submit this form to the meeting Secretary prior to the discussion item.

- 1) You will be called forward when it is your turn to speak
- 2) State your name and speak clearly into the microphone
- 3) Limit your comments to the time allotted
- 4) Provide any written materials to the meeting Secretary
- 5) Speakers are solely responsible for the content of their statement

Date:

4/2/21

Name: (Please Print)

LEDA SHAPIRO

Ashland Resident:

YES NO City: _____

Agenda Topic/Item Number:

Public Forum Topic (Non-agenda Item):

VACANT POSITIONS

Please respect the order of proceedings and strictly follow the directions of the presiding officer. Behavior or actions which are loud or disruptive are disrespectful and offenders will be requested to leave.

Disclaimer: By submitting this request to address the Public Body, I agree that I will refrain from the use of any obscene, vulgar, or profane language. I understand that if I do not follow procedure my speaking time may be terminated, and I may be requested to sit down or leave the building.



SPEAKER REQUEST FORM

Submit this form to the meeting Secretary prior to the discussion item.

- 1) You will be called forward when it is your turn to speak
- 2) State your name and speak clearly into the microphone
- 3) Limit your comments to the time allotted
- 4) Provide any written materials to the meeting Secretary
- 5) Speakers are solely responsible for the content of their statement

Date:

6 / 2 / 26

Name: (Please Print)

SHARON BRYSON

Ashland Resident:

YES NO City: _____

Agenda Topic/Item Number:

Public Forum Topic (Non-agenda Item):

Poison

Please respect the order of proceedings and strictly follow the directions of the presiding officer. Behavior or actions which are loud or disruptive are disrespectful and offenders will be requested to leave.

Disclaimer: By submitting this request to address the Public Body, I agree that I will refrain from the use of any obscene, vulgar, or profane language. I understand that if I do not follow procedure my speaking time may be terminated, and I may be requested to sit down or leave the building.



SPEAKER REQUEST FORM

Submit this form to the meeting Secretary prior to the discussion item.

- 1) You will be called forward when it is your turn to speak
- 2) State your name and speak clearly into the microphone
- 3) Limit your comments to the time allotted
- 4) Provide any written materials to the meeting Secretary
- 5) Speakers are solely responsible for the content of their statement

Date:

2 June

Name: (Please Print)

John MAURER

Ashland Resident:

YES NO City: _____

Agenda Topic/Item Number:

Healthcare

Public Forum Topic (Non-agenda Item):

Please respect the order of proceedings and strictly follow the directions of the presiding officer. Behavior or actions which are loud or disruptive are disrespectful and offenders will be requested to leave.

Disclaimer: By submitting this request to address the Public Body, I agree that I will refrain from the use of any obscene, vulgar, or profane language. I understand that if I do not follow procedure my speaking time may be terminated, and I may be requested to sit down or leave the building.



City of Ashland
Wastewater and Storm Drain Rate Study



March 16, 2026

Agenda

- 1 General Overview of the Rate Setting Process**
- 2 Wastewater Rate Study**
- 3 Storm Drain Rate Study**
- 4 Summary and Next Steps**



1

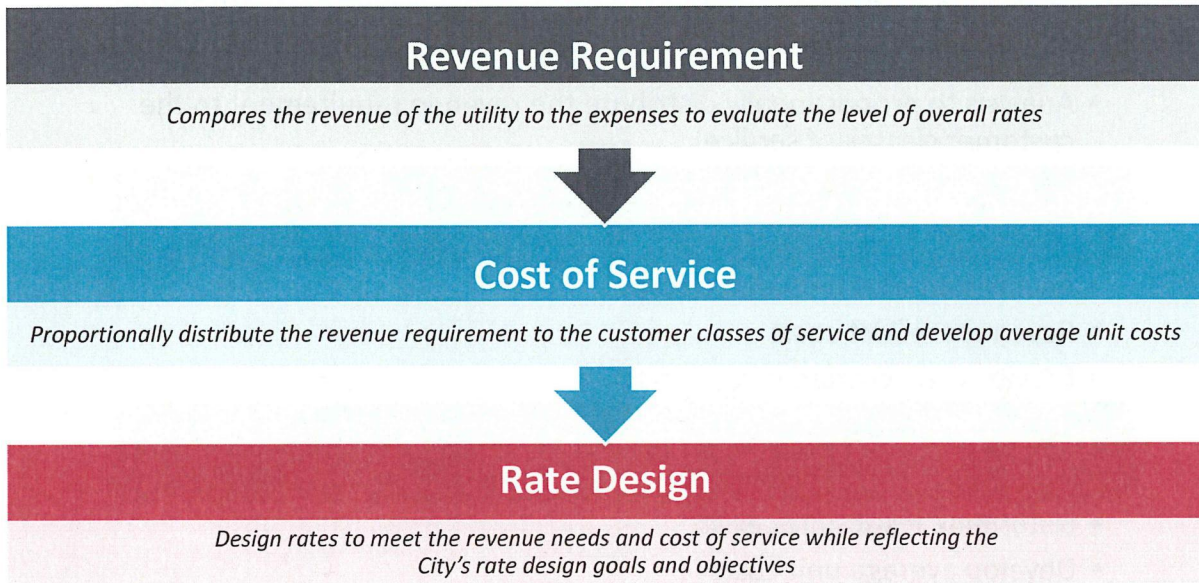
General Overview of the Rate Setting Process



Purpose of a Rate Study

- Determine a projection of sufficient revenue to operate and maintain the City's wastewater and storm drain infrastructure
- Develop cost-based wastewater and storm drain rates
- Reflect prudent financial planning criteria
 - Prudent funding of annual O&M expenses
 - Meet target minimum reserve balances
 - Adequately fund identified capital improvement and replacement needs
- Develop the Study using generally accepted methodologies tailored to the City's systems and customer characteristics

Rate Study Overview



Revenue Requirement Analysis Overview

- Compares utility revenues to expenses**
 - Determines the level of revenue (rate) adjustment necessary
- Uses prudent financial planning criteria**
 - Adequate funding of renewal and replacement
 - Maintaining sufficient ending reserve balances
- Reviews a specific time period**
 - Typically, 2 – 5-year rate setting period
 - 10-year planning period
- Utilities analyzed on a stand-alone basis**
 - No transfer of funds from other City funds
 - Rates need to support operations and capital
- Utilizes the cash basis methodology**
 - Generally accepted method for municipal utilities

Cost of Service Analysis Overview

What is Cost of Service?

- Analysis to proportionally distribute the revenue requirement to the customer classes of service

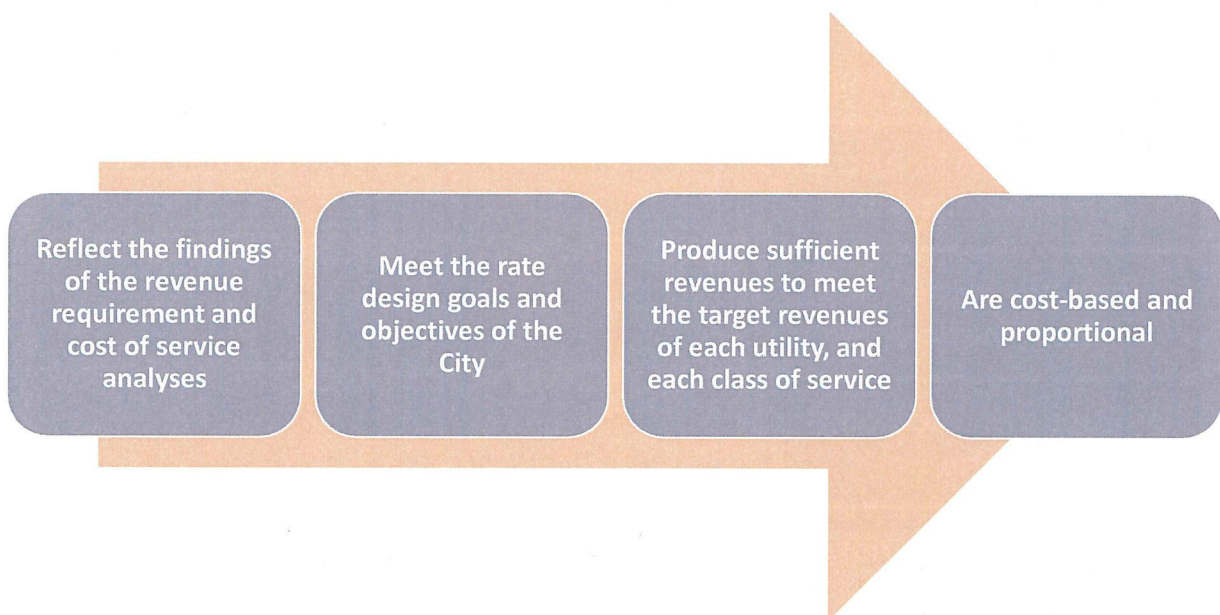
Why Cost of Service?

- Avoids subsidies between classes
- Revenues reflect costs
- Provides an accurate price signal

Objectives of Cost of Service

- Determine if subsidies exist
- Develop average unit costs

Rate Design Analysis Overview



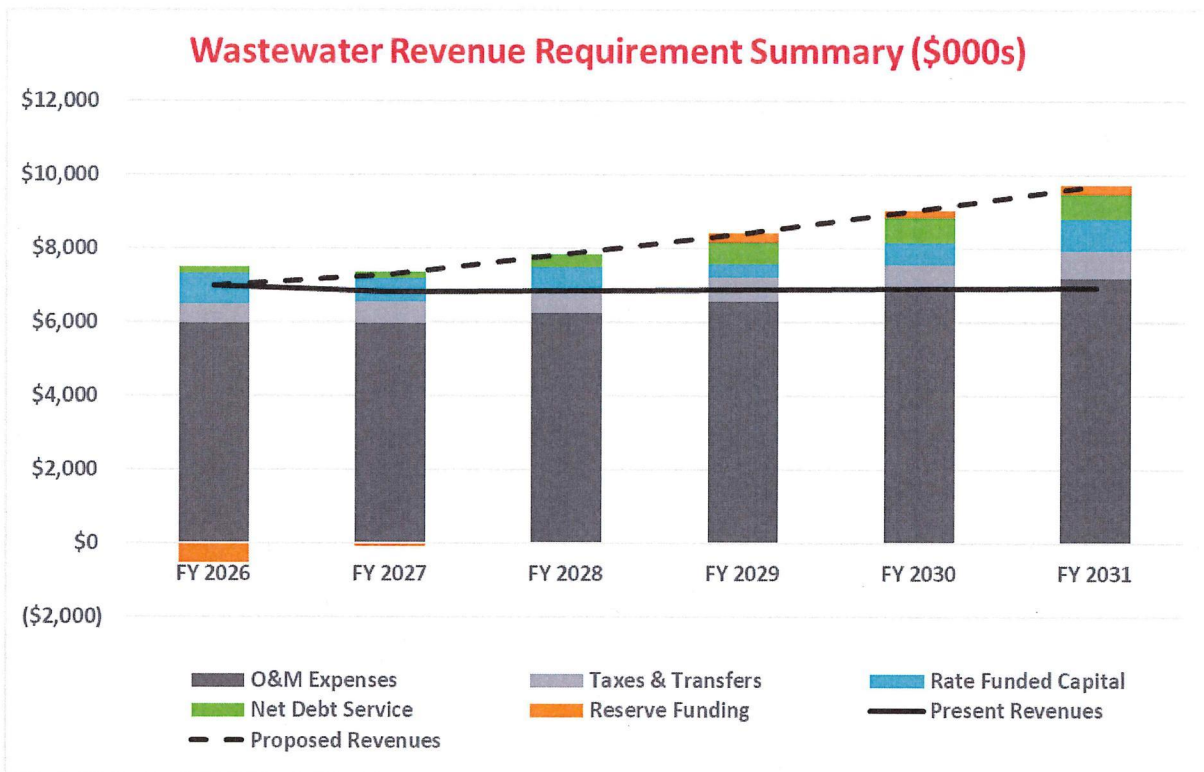
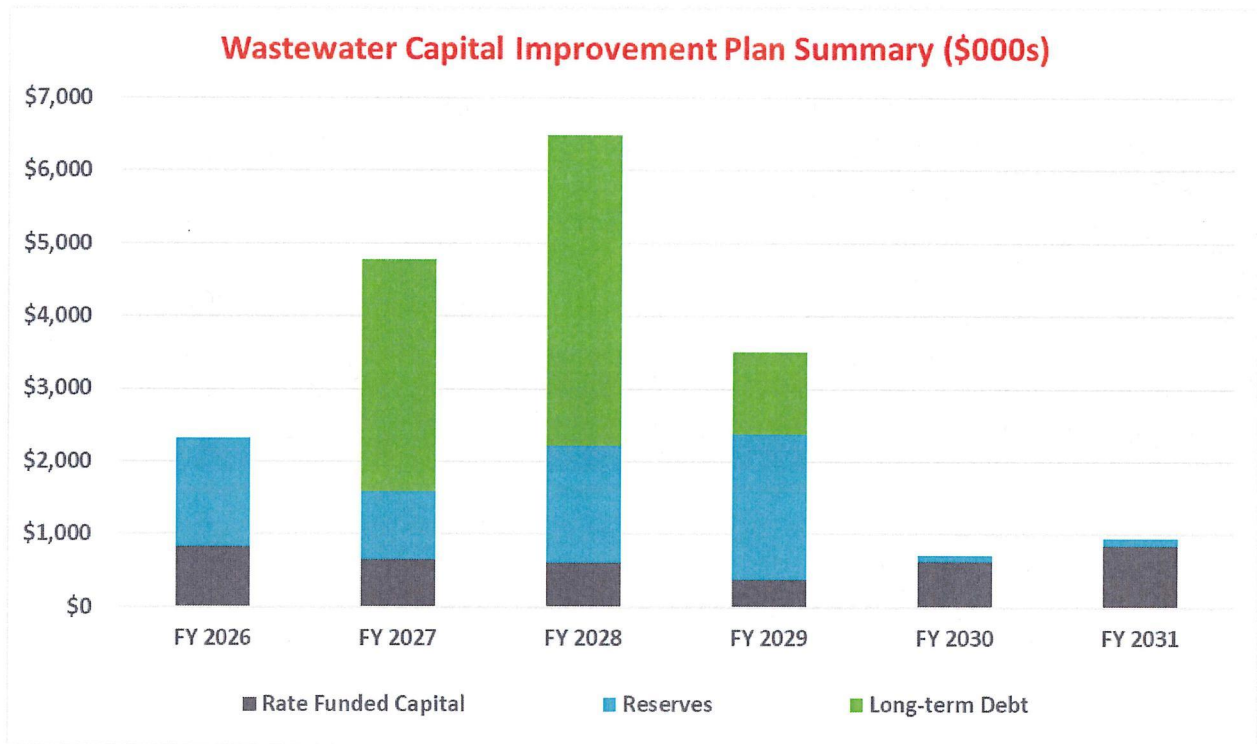
2

Wastewater Rate Study

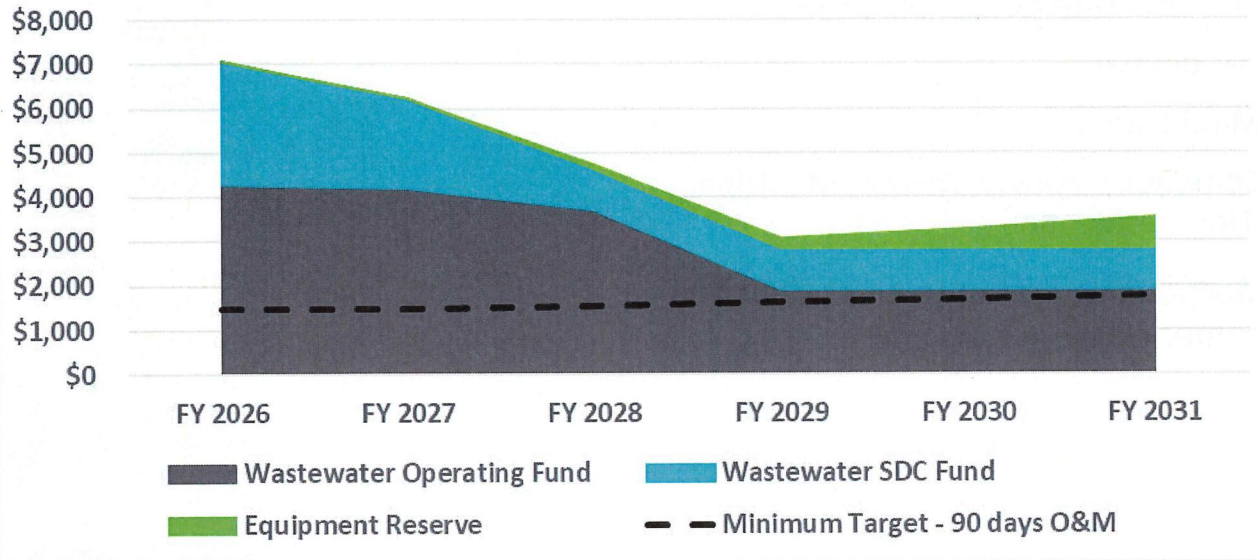
Wastewater Revenue Requirement Assumptions

- Revenues independently calculated based on specific customer characteristics of the wastewater system
- O&M expenses based on FY 2026 and FY 2027 budgets
 - Projected through FY 2036 based on annual inflationary factors
 - Contribution to equipment reserve starting in FY 2028 (\$100,000)
- Capital funding analysis based on wastewater capital improvement plan
 - \$18.8M total from FY 2026 through FY 2031
 - Rate funding averaging over \$650,000 per year
 - Assumed long-term borrowing
 - WWTP Headworks (\$6.4M, low-interest loan)
 - Hardesty Site Development & Equipment Storage (\$2.2M, revenue bond)





Wastewater Ending Reserve Fund Balances (\$000s)



13

Summary of the Wastewater Revenue Requirement

- Developed based on prudent financial planning criteria and industry standard approaches
- Utilizes City customer characteristics, growth, and inflation assumptions
- Determines adequate funding for the wastewater utility to operate on a financially stable basis

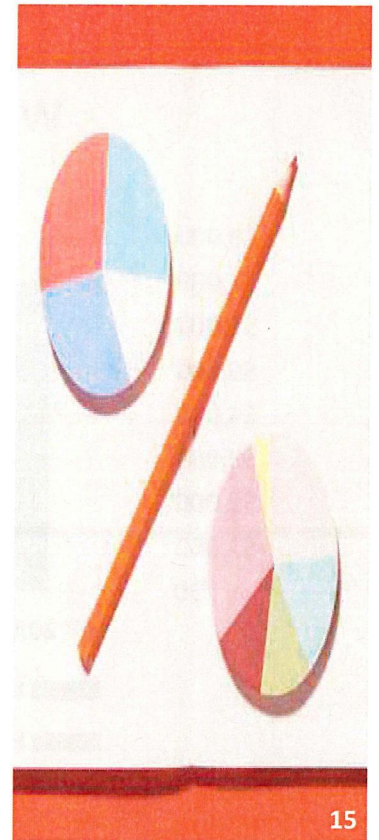
	FY 2026	FY 2027	FY 2028	FY 2029	FY 2030	FY 2031
Wastewater Residential Customer Bill						
Avg. Customer Bill ^[1]	\$33.94	\$36.32	\$38.86	\$41.58	\$44.49	\$47.60
Monthly \$ Change		2.38	2.54	2.72	2.91	3.11

[1] - Assumes service charge + 400 CF

14

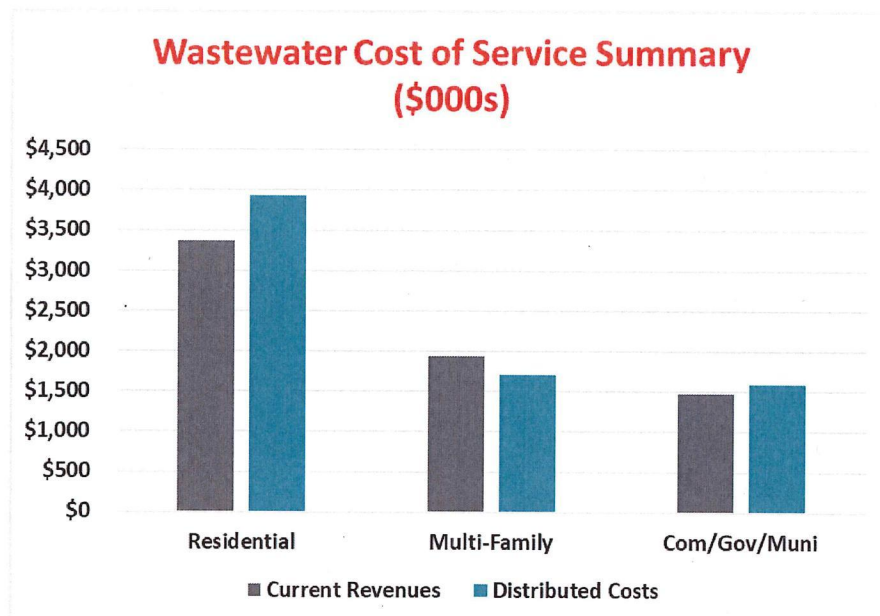
Wastewater Cost of Service Assumptions

- Customers grouped into homogeneous customer classes of service for cost of service and rate design purposes
 - Residential
 - Multi-Family
 - Commercial/Governmental/Municipal (Non-Residential)
- Proportionally distribute costs between customer classes of service



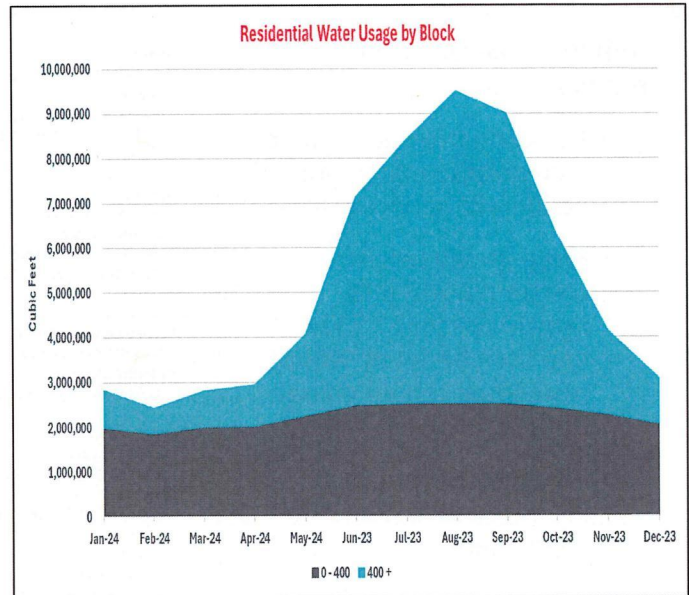
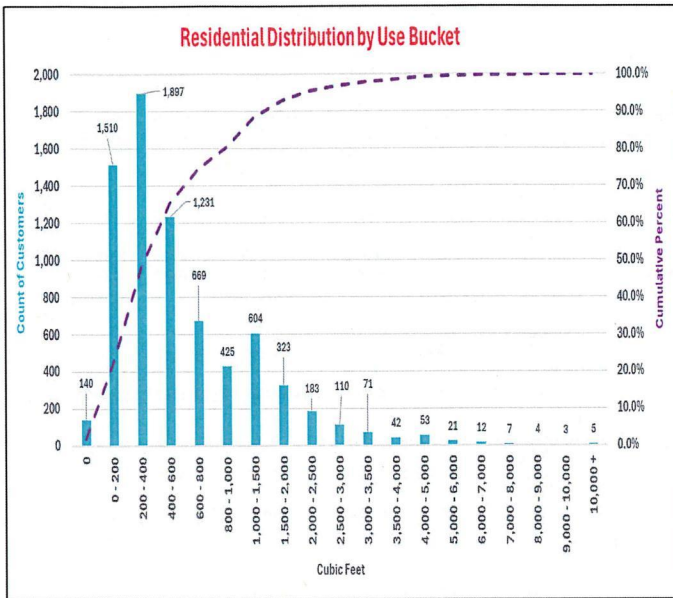
15

Wastewater Cost of Service Results



16

Wastewater Winter Water Average Tiers Analysis



Wastewater Rate Design – Status Quo

Status Quo Rates:

- Adjust wastewater rates for all customer classes at system rate adjustment
- No changes to the structure of the rates

	Present Rates	Proposed Rates				
		FY 2027	FY 2028	FY 2029	FY 2030	FY 2031
Residential						
Service Charge	\$ / Month					
Monthly Service Charge	\$33.94	\$36.32	\$38.86	\$41.58	\$44.49	\$47.60
Quantity Charge	\$ / CF					
0 - 400 CF up to Winter Water Average	\$0.00000	\$0.00000	\$0.00000	\$0.00000	\$0.00000	\$0.00000
400+ CF up to Winter Water Average	0.05064	0.05418	0.05797	0.06203	0.06637	0.07102
Multi-Family						
Service Charge	\$ / Month					
Monthly Service Charge - Units	\$33.94	\$36.32	\$38.86	\$41.58	\$44.49	\$47.60
Quantity Charge	\$ / CF					
0 - 400 CF up to Winter Water Average	\$0.00000	\$0.00000	\$0.00000	\$0.00000	\$0.00000	\$0.00000
400+ CF up to Winter Water Average	0.05064	0.05418	0.05797	0.06203	0.06637	0.07102
Commercial						
Service Charge	\$ / Month					
Monthly Service Charge	\$35.41	\$37.89	\$40.54	\$43.38	\$46.42	\$49.67
Quantity Charge	\$ / CF					
Actual Monthly Consumption	\$0.05621	\$0.06014	\$0.06435	\$0.06885	\$0.07367	\$0.07883
Governmental						
Service Charge	\$ / Month					
Monthly Service Charge	\$35.41	\$37.89	\$40.54	\$43.38	\$46.42	\$49.67
Quantity Charge	\$ / CF					
Actual Monthly Consumption	\$0.05621	\$0.06014	\$0.06435	\$0.06885	\$0.07367	\$0.07883
Municipal						
Service Charge	\$ / Month					
Monthly Service Charge	\$35.41	\$37.89	\$40.54	\$43.38	\$46.42	\$49.67
Quantity Charge	\$ / CF					
Actual Monthly Consumption	\$0.05621	\$0.06014	\$0.06435	\$0.06885	\$0.07367	\$0.07883

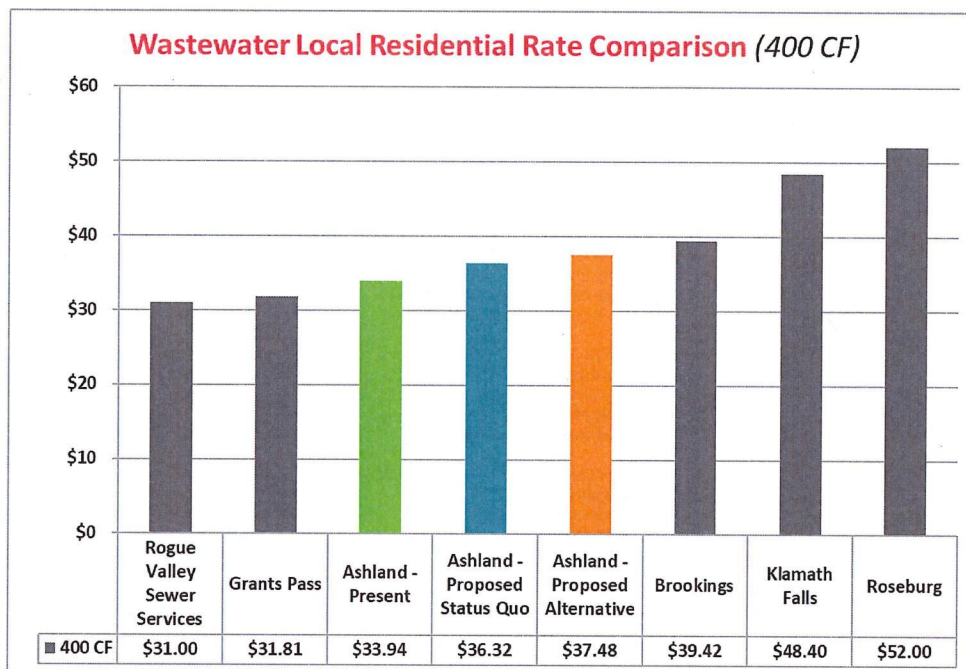
Wastewater Rate Design – Rate Design Alternative

Alternative Rates:

- Reflects cost of service results
 - Residential service charge increased to match non-residential service charges
 - Multi-family service charge proposed to remain flat for FY 2027 and then be set at 90% of residential service charge in each following year
 - All quantity charges increased at system rate adjustment

	Present Rates	Proposed Rates				
		FY 2027	FY 2028	FY 2029	FY 2030	FY 2031
Residential						
Service Charge	<i>\$ / Month</i>					
Monthly Service Charge	\$33.94	\$37.48	\$40.18	\$42.99	\$46.00	\$49.22
Quantity Charge	<i>\$ / CF</i>					
0 - 400 CF up to Winter Water Average	\$0.00000	\$0.00000	\$0.00000	\$0.00000	\$0.00000	\$0.00000
400+ CF up to Winter Water Average	0.05064	0.05418	0.05797	0.06203	0.06637	0.07102
Multi-Family						
Service Charge	<i>\$ / Month</i>					
Monthly Service Charge - Units	\$33.94	\$33.94	\$36.16	\$38.69	\$41.40	\$44.30
Quantity Charge	<i>\$ / CF</i>					
0 - 400 CF up to Winter Water Average	\$0.00000	\$0.00000	\$0.00000	\$0.00000	\$0.00000	\$0.00000
400+ CF up to Winter Water Average	0.05064	0.05418	0.05797	0.06203	0.06637	0.07102
Commercial						
Service Charge	<i>\$ / Month</i>					
Monthly Service Charge	\$35.41	\$37.48	\$40.18	\$42.99	\$46.00	\$49.22
Quantity Charge	<i>\$ / CF</i>					
Actual Monthly Consumption	\$0.05621	\$0.06014	\$0.06435	\$0.06885	\$0.07367	\$0.07883
Governmental						
Service Charge	<i>\$ / Month</i>					
Monthly Service Charge	\$35.41	\$37.48	\$40.18	\$42.99	\$46.00	\$49.22
Quantity Charge	<i>\$ / CF</i>					
Actual Monthly Consumption	\$0.05621	\$0.06014	\$0.06435	\$0.06885	\$0.07367	\$0.07883
Municipal						
Service Charge	<i>\$ / Month</i>					
Monthly Service Charge	\$35.41	\$37.48	\$40.18	\$42.99	\$46.00	\$49.22
Quantity Charge	<i>\$ / CF</i>					
Actual Monthly Consumption	\$0.05621	\$0.06014	\$0.06435	\$0.06885	\$0.07367	\$0.07883

Local Comparison - Wastewater



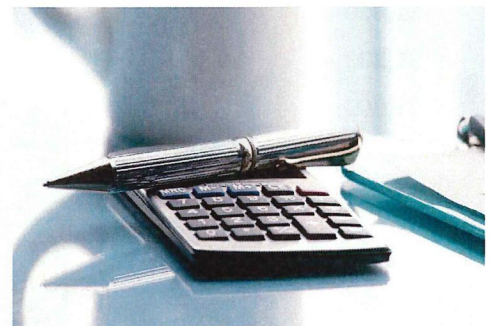


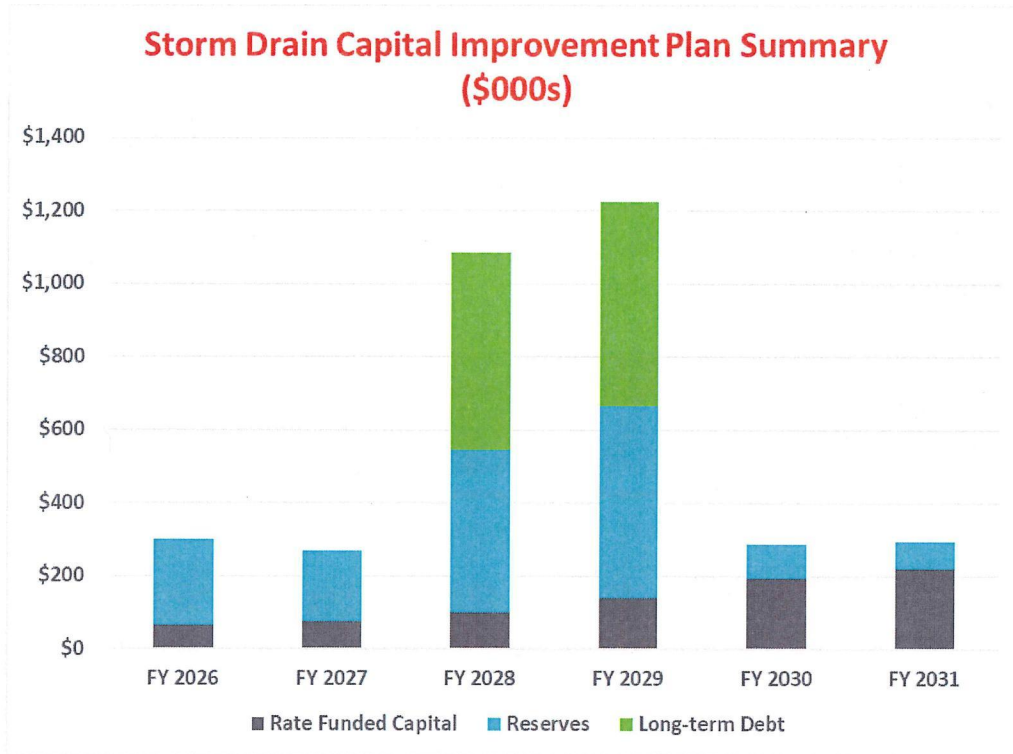
3

Storm Drain Rate Study

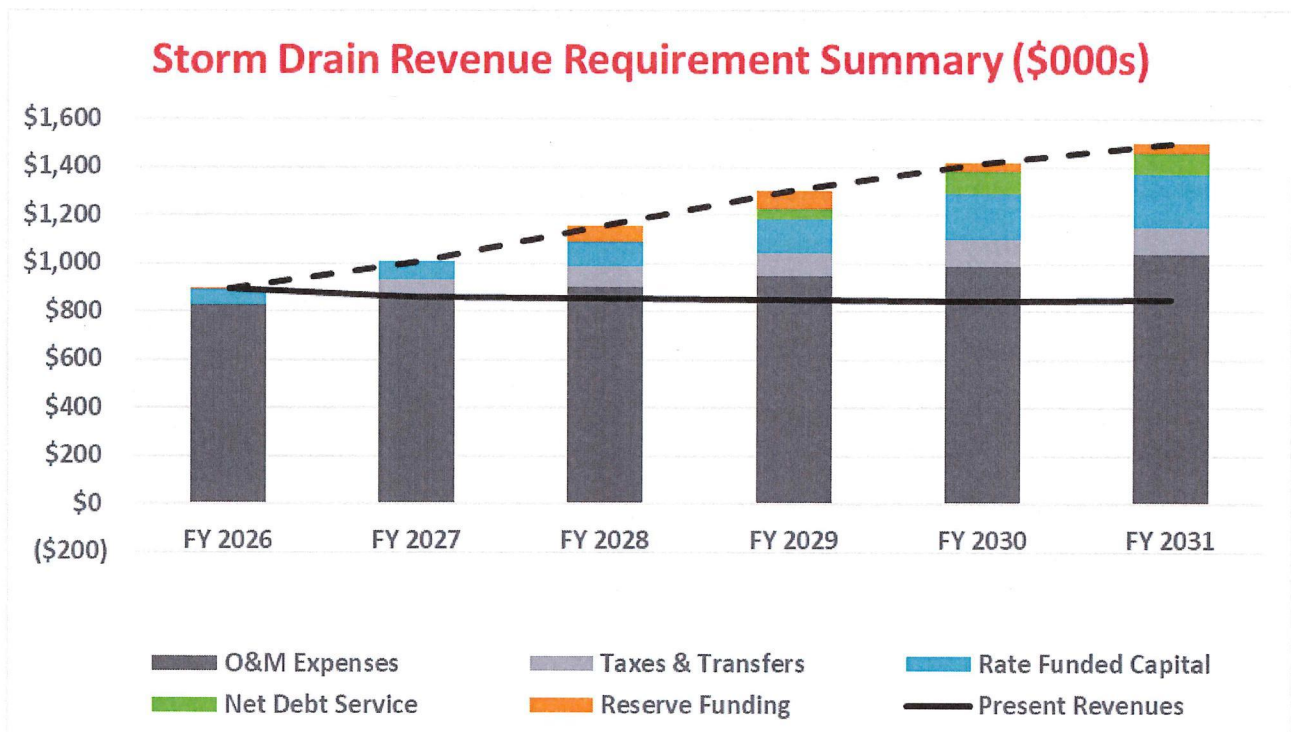
Storm Drain Revenue Requirement Assumptions

- Revenues independently calculated based on specific customer characteristics of the storm drain system
- O&M expenses based on FY 2026 and FY 2027 budgets
 - Projected through FY 2036 based on annual inflationary factors
 - Franchise tax payments starting FY 2027 (8.0% of rate revenues)
 - Contribution to equipment reserve starting in FY 2028 (\$25,000)
- Capital funding analysis based on storm drain capital improvement plan
 - Total of \$3.5M from FY 2026 through FY 2037
 - Averages \$133,000 per year from rate funded capital
 - Assumed long-term borrowing
 - Hardesty Site Development & Equipment Storage (\$1.1M, revenue bond)

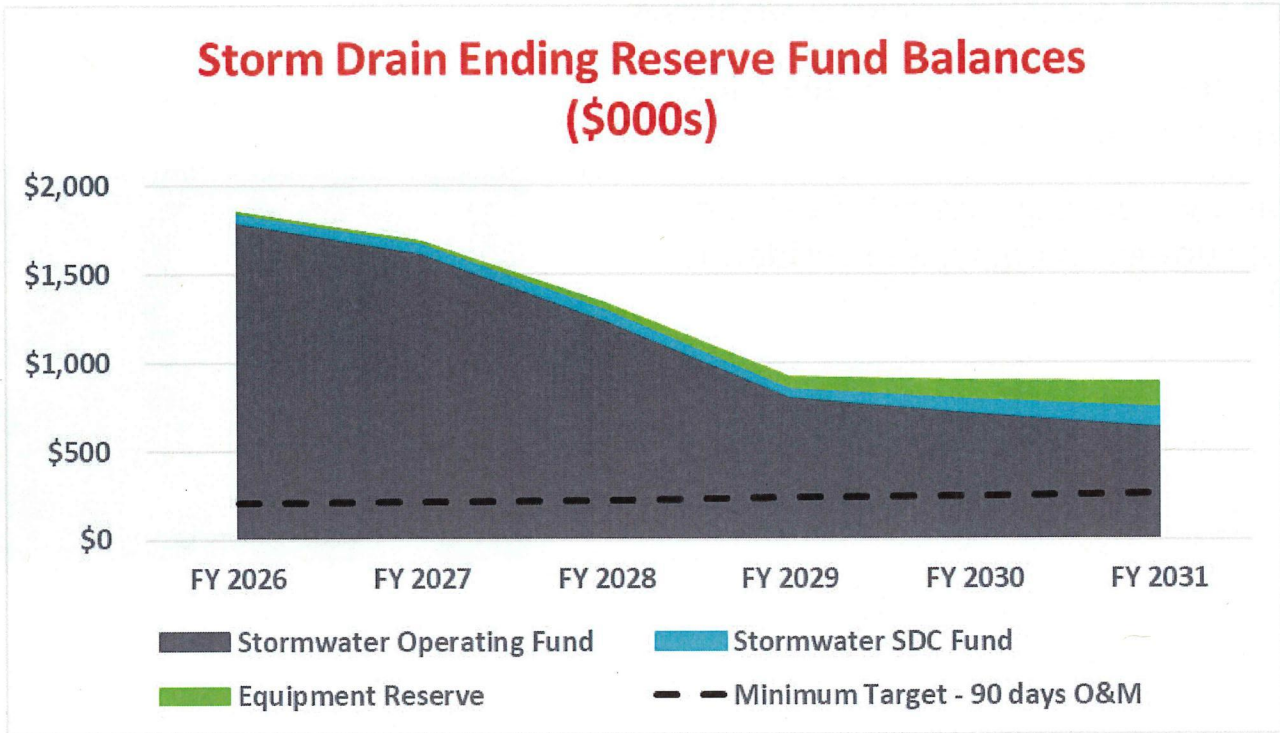




23



24



Summary of the Storm Drain Revenue Requirement

- Developed based on prudent financial planning criteria and industry standard approaches
- Utilizes City storm drain customer characteristics, growth, and inflation assumptions
- Determines adequate funding for the storm drain utility to operate on a financially stable basis

	FY 2026	FY 2027	FY 2028	FY 2029	FY 2030	FY 2031
Storm Drain Residential Customer Bill						
Avg. Customer Bill ^[1]	\$5.43	\$6.43	\$7.43	\$8.44	\$9.19	\$9.68
Monthly \$ Change		1.00	1.00	1.00	0.75	0.50

[1] - Per equivalent residential unit (ERU)

Storm Drain Cost of Service Analysis

- Simplified cost of service analysis for storm drain utility
- Total revenue requirement divided by total number of equivalent residential units



27

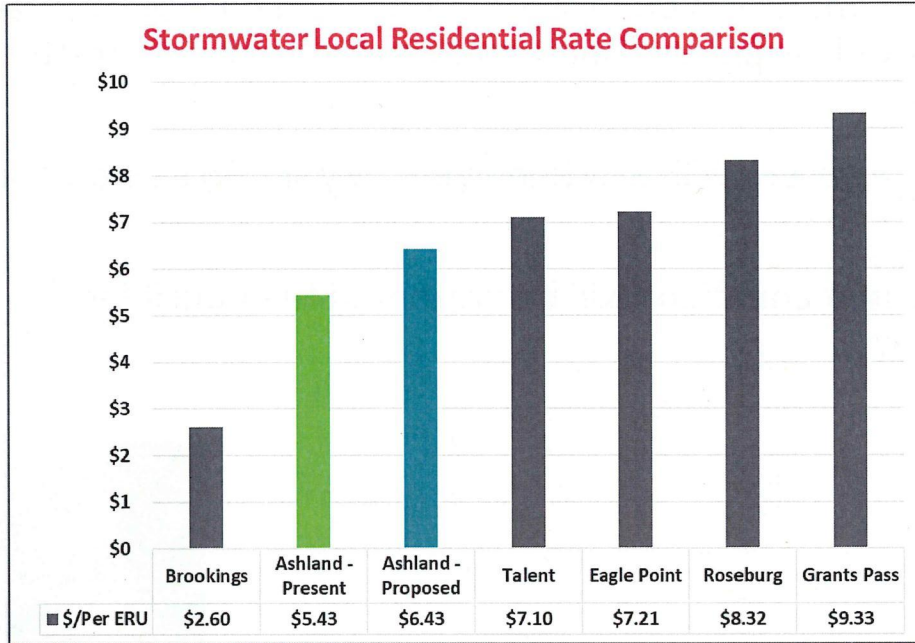
Storm Drain Rate Design

- No rate structure changes are proposed
- Rates are increased to meet revenue requirement

		Present Rates	FY 2027	FY 2028	FY 2029	FY 2030	FY 2031
Single Family	(\$ / ERU)	\$5.43	\$6.43	\$7.43	\$8.43	\$9.18	\$9.68
Multi-Family	(\$ / ERU)	2.33	2.76	3.19	3.62	3.94	4.15
Commercial	(\$ / ERU)	5.43	6.43	7.43	8.43	9.18	9.68
All Other	(\$ / 1,000 sq. ft.)	1.80	2.13	2.46	2.79	3.04	3.20
Minimum Charge	(\$ / ERU)	5.43	6.43	7.43	8.43	9.18	9.68

28

Local Comparison – Storm Drain



4

Summary and Next Steps

Summary and Next Steps

- The wastewater and storm drain studies are based on industry standard approaches as well as City specific system and customer characteristics for each utility
- Draft technical analyses will be refined with City staff based on Council feedback
- Final study recommendations will be presented to Council for implementation



31

Questions and Discussion





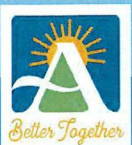
Fire Season 2026

Preparedness summary

June 2, 2026

Wild fire Mitigation & Preparedness

- Outreach and Education
 - Collaboration with Ashland School District
 - Engaged approximately 1000 citizens through community events and online workshops including a collaboration with IBHS.



Wild fire Mitigation & Preparedness

- Community mitigation
 - Green debris drop off event
 - NW Youth Corps



3

Wild fire Mitigation & Preparedness

- Forestry
 - Pile burning completed
 - Re-Forestation in Siskiyou Mountain Park
 - Grant funding secured
 - Watershed drone flights



4

Wild fire Mitigation & Preparedness

- Weed Abatement
 - Cases in 2026 – 72
 - Citations – 4
 - Abatement Processes - 4
 - Total Acres Enforced - 50



5

Emergency Management Program

Wild fire Season Preparedness

- Evacuation Zones and Routes
- Evacuation Planning (Level 1, 2, 3)

Regional Coordination:

- Emergency Preparedness Events
- Jackson Alerts/Everbridge

Individual Preparedness:

- Ashland CERT – Basic Training 2026
- Better Prepared Neighborhoods

What's Next?

- Drought, Heat and Fire Season
- October Full Functional Exercise "Dam Failure"



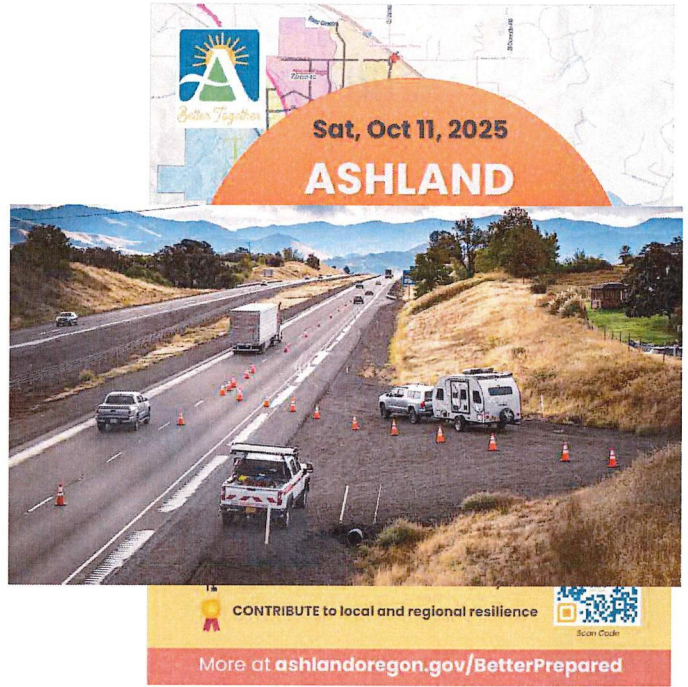
6

Emergency Management

Wild fire Preparedness

Evacuation Zones and Routes

Community Wide Evacuation Drill
2025
Research Report coming soon



The graphic features a map of Ashland with an orange semi-circle overlay. Text on the map includes "Sat, Oct 11, 2025" and "ASHLAND". Below the map is a photograph of a highway with orange traffic cones and a white van. At the bottom, there is a yellow banner with the text "CONTRIBUTE to local and regional resilience" and a QR code, and a red banner with the text "More at ashlandoregon.gov/BetterPrepared".

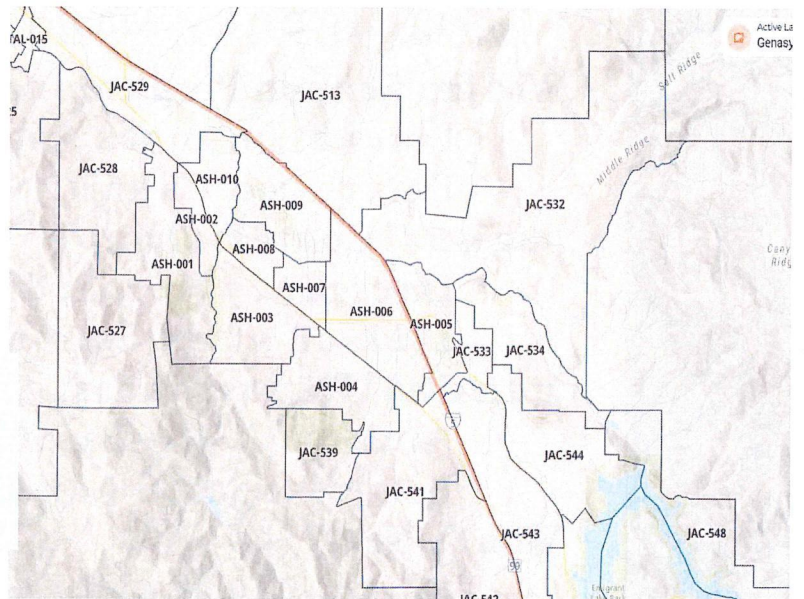


Emergency Management

Wild fire Preparedness

Evacuation Zones and Routes

Genasys Protect mapping tool



Wild fire Preparedness

Evacuation Planning

Plan what your actions are for

- Level 1 Be Ready
- Level 2 Be Set
- Level 3 Go Now!



BE SET

BE SET TO EVACUATE AT A MOMENT'S NOTICE
SIGNIFICANT DANGER IN THE AREA

- ⚠ Follow your emergency plan and grab your go-kit of supplies.
- ⚠ Check news and radio for updates.
- ⚠ Inform loved ones of your evacuation plans.
- ⚠ Conditions can change rapidly. Leave if you feel unsafe.



Wild fire Preparedness

BE READY.
BE SET.
GO NOW!

Know evacuation levels and follow advice of emergency officials.
Make the best decision for your safety. Don't wait to evacuate if you feel unsafe!



BE READY

PREPARE TO EVACUATE
BE AWARE OF DANGER IN THE AREA

- ✓ Stay informed.
- ✓ Have your plan & go-kit ready.
- ✓ Act early if you or your loved ones can't move quickly.



BE SET

BE SET TO EVACUATE AT A MOMENT'S NOTICE
SIGNIFICANT DANGER IN THE AREA

- ⚠ Follow your evacuation plan & grab your go-kit.
- ⚠ Check news & radio for updates.
- ⚠ Conditions change rapidly. Leave if you feel unsafe.



GO NOW!

LEAVE IMMEDIATELY!
EXTREME DANGER IN THE AREA

- 🚗 Leave without delay. It is unsafe to stay.
- 🚗 Do not stop to gather belongings or protect your home.
- 🚗 Do not return until officials announce the area is safe.

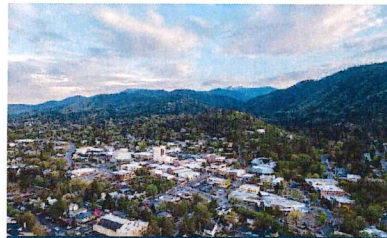


Emergency Preparedness

Regional Coordination



Emergency Preparedness
Events

**Business Emergency
Preparedness Workshop**
June 4, 2026



Presented
By **ASHLAND**
Chamber of Commerce

With sponsors:

Ashland Community Health Foundation
Reinholdt & O'Harra Insurance
United Way of Jackson County

Free Business Emergency Preparedness Workshop

Prepare your business for wildfire, smoke, water impacts, evacuation planning, employee safety, and business continuity. Receive practical tools, resources, and preparedness materials you can use right away.

Thursday, June 4, 2026
9-11AM Doors Open at 8:30 AM
Light Refreshments Provided

Oregon Shakespeare Festival
Hay-Patton Rehearsal Center 1-A
Enders Alley, Ashland

Register at
ashlandchamber.com/prepare



Emergency Preparedness

Regional Coordination

Emergency Preparedness
Events

**Better Prepared July 15 @ SOU
Chamber of Commerce May 4**
Want to see last years?

<https://ashlandoregon.gov/betterpreparedseries>



Take Action
to be Better
Prepared!
Better Together


**Better Prepared
Wildfire Series**

JULY 15
What's Your Plan?
6 to 8 p.m.
Rogue River Room
Southern Oregon University
*When every Second
Counts: Evacuation
Planning & Practice*
Hosted by
Ashland.news

CITY OF ASHLAND
Ashland.news
Community supported nonprofit news

Ashland Climate Collaborative
Working together for a resilient future

More info
[@ashlandoregon.gov/
BetterPreparedSeries](https://ashlandoregon.gov/BetterPreparedSeries)
register here



Emergency Preparedness

Regional Coordination

Emergency Preparedness
Events

Ashland Emergency Management is coordinating ongoing preparedness trainings all season long

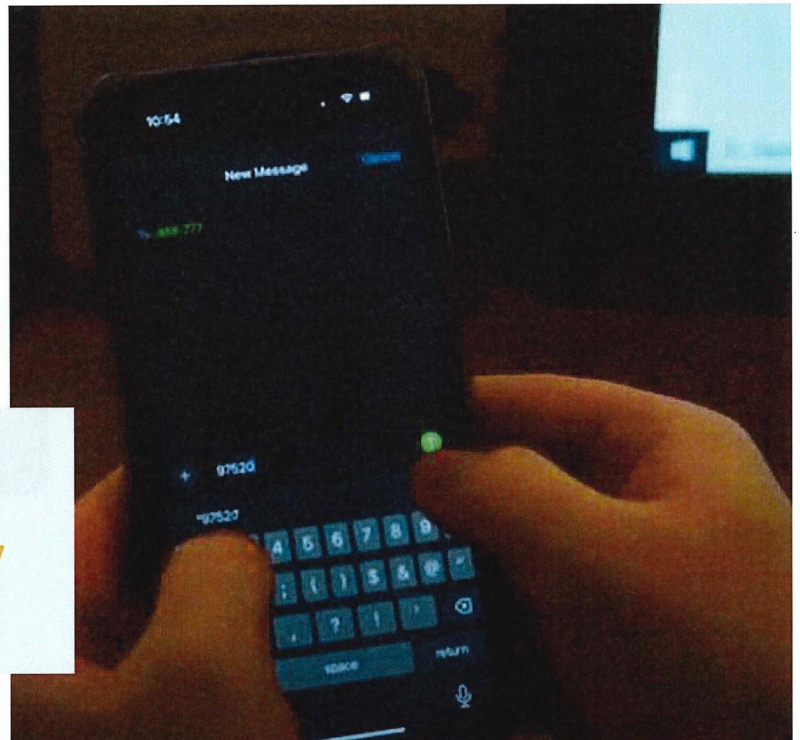


Emergency Preparedness

Regional Coordination

Jackson Alerts/Everb ridge

Evacuation Messages aligned county-wide, plus
TEXT: JACKSONEVACS to 888777
and Spanish translations



Regional Coordination

**ESTE PREPARADO
ESTE LISTO
¡VAYASE AHORA!**

Conozca los niveles de evacuación y siga el consejo de los oficiales de emergencia. Tome la mejor decisión para su seguridad. Si usted se siente inseguro, no se espere para evacuar.



ESTE PREPARADO

PREPÁRESE PARA EVACUAR.
ESTE CONSCIENTE DEL PELIGRO EN SU ZONA

- ✓ *Manténgase informado.*
- ✓ *Tenga preparado su plan y el kit para llevar.*
- ✓ *Actúe de manera temprana si usted o un ser querido no se puede mover rápido.*



ESTE LISTO

ESTE LISTO PARA EVACUAR EN CUALQUIER MOMENTO.

ALTO PELIGRO EN SU ZONA

- ⚠ *Siga su plan de evacuación y agarre su kit para llevar.*
- ⚠ *Escuche las noticias y la radio para actualizarse.*
- ⚠ *Las condiciones pueden cambiar rápidamente. Si usted se siente inseguro, váyase.*



¡VAYASE AHORA!

¡VAYASE INMEDIATAMENTE!

ALTO PELIGRO EN SU ZONA

- 🚫 *Váyase sin demora. No es seguro quedarse.*
- 🚫 *No se detenga para recolectar sus pertenencias o proteger su casa.*
- 🚫 *No regrese a la zona hasta que las autoridades anuncien que el área es segura.*



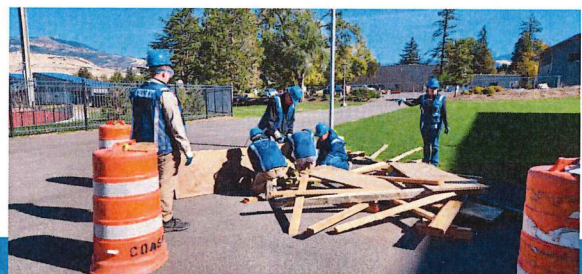
Individual Preparedness

Ashland CERT

Public Outreach and

Education

Monthly trainings,
September 2026 Basic Training
Academy



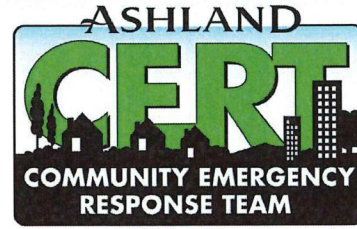
Emergency Preparedness

Individual Preparedness

Ashland CERT

Better Prepared

Neighborhoods program



Better Prepared Neighborhoods

Learn Wild fire Risk Assessment and Evacuation Preparedness



Emergency Preparedness

What's Next?

Drought, Heat and Fire Season

Research Project Reports

October 2026 Full Functional Exercise "Dam Failure"

Household Response to Wildfire report:
<https://ashlandoregon.gov/betterpreparedseries>



Fire. Water. Get Ready.

Better Prepared. Better Together

"Fire. Water. Get Ready."
public awareness campaign -
Are you ready?

Oregon's 2026 fire and drought season is here. Find out how the City of Ashland is responding and what you can do. Fire. Water. Get Ready. Better Prepared. Better Together.

Let's get ready...



THOUGHTS, QUESTIONS, FEEDBACK?

Thank you for supporting our
emergency management program!





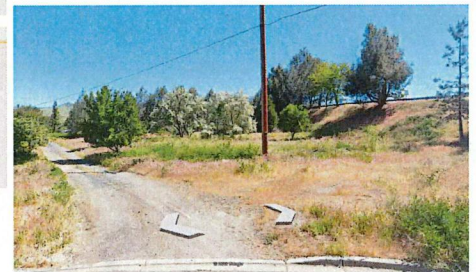
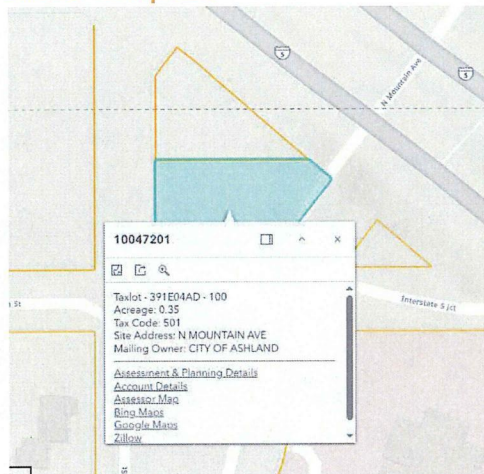
City Council Meeting

North Mountain Avenue Property Surplus June 2, 2026

VII. New Business

North Mountain Avenue Parcel Surplus

- The .35-acre parcel North Mountain zone (391E04AD TL#100)
- Appraised Value = \$300k (2021)
- 4.2 Units (density) North Mountain Multi-Family
- Utilities Available



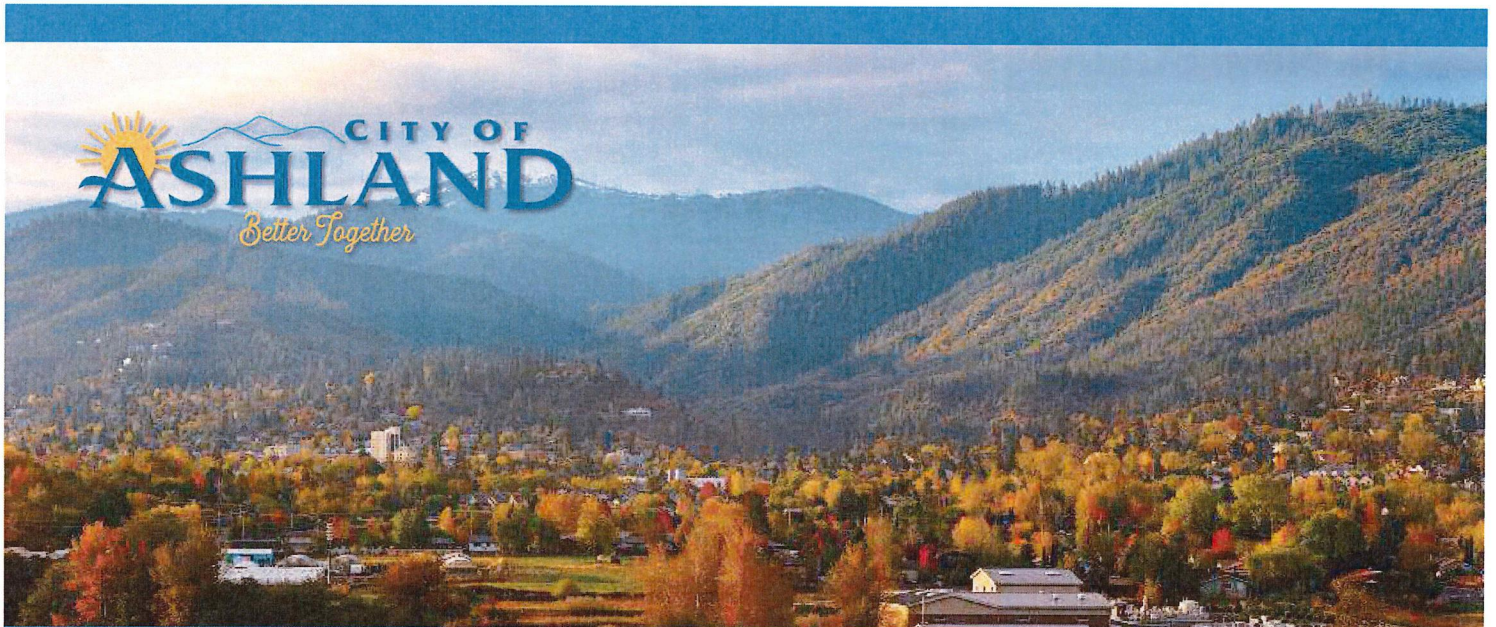
VII. New Business

North Mountain Avenue Parcel Surplus – Motion

I move to surplus tax lot #100 from Assessor Map 391E04AD

North Mountain Avenue Parcel Surplus – Next Steps

- Schedule Public Hearing with Terms and Conditions (AMC 2.55)
 - A description of the property or interest to be sold;
 - The proposed uses for the property;
 - The reasons why the City Council considers it necessary or convenient to sell the property; and
 - The time and place of the public hearing at which the sale of the property will be discussed.
- Staff Recommends
 - Market Based Sale Using Listing Agent



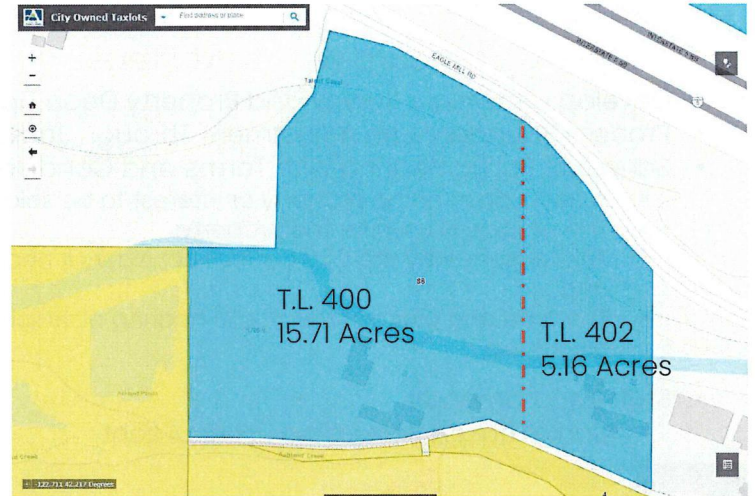
City Council Meeting

Hardesty Property Surplus June 2, 2026

VII. New Business

Hardesty Property Surplus

- 1291 Oak Street - 5.16 Acres
- Jackson County Exclusive Farm Use Zoning
 - 2096 square foot two story house with outbuildings and garages
- Appraised Value T.L. #402 = \$685k (2021)



VII. New Business

Hardesty Property Surplus - Options

- Divest solely of Tax Lot #402 (5.16 Acres with House)
- Divest of Tax Lot #402 and Work Toward a Boundary Line Adjustment
 - Include North Portion of Tax Lot #400 (~ 10 Acres of Land)

1291 Oak Street, Ashland
381E33 402 and 400 (boundary lines not exact)



VII. New Business

Hardesty Parcel Surplus – Motion

I move to approve the surplus of the Hardesty Property tax lot 402 with the recommended boundary line adjustment.

Hardesty Parcel Surplus – Next Steps

- Develop Necessary Survey and Property Deed Updates
- Process Boundary Line Adjustment Through Jackson County
- Schedule Public Hearing with Terms and Conditions (AMC 2.55)
 - A description of the property or interest to be sold;
 - The proposed uses for the property;
 - The reasons why the City Council considers it necessary or convenient to sell the property; and
 - The time and place of the public hearing at which the sale of the property will be discussed.
- Staff Recommends
 - Market Based Sale Using Listing Agent



QUESTIONS?

