



# Parks & Recreation Commission Meeting Agenda

ASHLAND PARKS & RECREATION COMMISSION

BUSINESS MEETING AGENDA

Wednesday, April 8, 2026

Council Chamber, 1175 E Main Street - 6:00 PM

To attend the meeting or to provide public testimony, see participation instructions.

**I. CALL TO ORDER**

**II. ROLL CALL**

**III. APPROVAL OF MINUTES**

1. Park Commission Business Meeting March 11, 2026

**IV. ADDITIONS OR DELETIONS TO THE AGENDA**

**V. PUBLIC FORUM**

**VI. CONSENT AGENDA**

**VII. BUSINESS**

1. Hunter Park Tennis Courts Project

**VIII. ACTING DIRECTORS REPORT**

**IX. ITEMS FROM COMMISSIONERS/STAFF**

**X. UPCOMING MEETING DATES**

1. Joint Meeting with City Council May 5, Council Chamber 6:00 PM
2. Park Commission Business Meeting May 13, Council Chamber 6:00 PM
3. Park Commission Study Session June 3, Council Chamber 6:00 PM
4. Park Commission Business Meeting June 10, Council Chamber 6:00 PM

**XI. ADJOURNMENT**





## Parks & Recreation Commission Meeting Agenda

*If you need special assistance to participate in this meeting, please contact Nancy Mero at [Nancy.mero@ashlandoregon.gov](mailto:Nancy.mero@ashlandoregon.gov) or 541-552-2256 (TTY phone number 1-800-735-2900). Notification at least three business days before the meeting will enable the City to make reasonable arrangements to ensure accessibility to the meeting in compliance with the Americans with Disabilities Act.*

### Participation Instructions

This meeting will be held in-person in Council Chamber 1175 E. Main St. Those who wish to provide oral testimony must attend the meeting, fill out a speaker request card, and give it to a staff member before the meeting begins. If you would like to give testimony electronically, please contact Nancy Mero at [nancy.mero@ashlandoregon.gov](mailto:nancy.mero@ashlandoregon.gov) by 10:00 AM the morning of the meeting. Please type “**Virtual Public Testimony**” in the subject line.

Written testimony will be accepted via email sent to Nancy Mero at [nancy.mero@ashland.or.us](mailto:nancy.mero@ashland.or.us). Please type “**Public Testimony**” in the subject line. Written testimony submitted by 11:00 AM the Tuesday before the meeting will be made available to the Park Commissioners before the meeting. All testimony will be included in the meeting minutes.

For ways to view this meeting and watch previously recorded Park Commission meetings, please visit this webpage. <https://ashlandoregon.gov/740/Watch-a-Meeting>





**MINUTES FOR REGULAR BUSINESS MEETING**

**PARK COMMISSION**

**March 11, 2026**

**Council Chamber, 1175 E Main – 6:00 PM**

Commissioners Present: Landt, Weiner, Bachman (Chair), Adams, Gardiner (Vice Chair)  
Staff Present: Deputy City Manager Rooklyn, Deputy Attorney Zahran, Acting Director Dials,  
Recreation Supervisor Flora, Administrative Coordinator Terry, Executive Assistant Mero  
Absent: None

- I. **CALL TO ORDER** – Chair Bachman called the meeting to order at 6:00 PM
- II. **ROLL CALL** – Commissioners Landt, Weiner, Bachman, Adams, and Gardiner present.
- III. **APPROVAL OF MINUTES**
  - 1. Park Commission Study Session February 4, 2026
  - 2. Joint Meeting with City Council/Park Commission Regular Business Meeting February 11, 2026

Chair Bachman asked for unanimous consent approval of the minutes. No objections, minutes approved by unanimous consent.

- IV. **ADDITIONS OR DELETIONS TO THE AGENDA** - None
- V. **PUBLIC FORUM** -  
Sharon Bryson, Ashland: A line of communication may be open with one of the Commissioners. Wants to start a dialogue with the public about Parks IPM Policy. Had a hard time finding information on the website. Confused by what she found. Would like public access to information on Parks IPM. Also there should be an annual report.
- VI. **CONSENT AGENDA** - None
- VII. **BUSINESS**
  - 1. **Recreation Division Annual Report** – Recreation Supervisor Flora

**SUMMARY** – Staff will present the 2025 Recreation Division Report that will summarize data related to programs and services in Ashland offered through APRD and in collaboration with partner organizations. These programs and services discussed include the Nature Center, Adult & Youth Recreation Programs, Community Events, Daniel Meyer Pool and Ashland Rotary Centennial Ice Rink.

**POLICIES, PLANS & GOALS SUPPORTED** – The mission of APRD is to provide and promote recreational opportunities and to preserve and maintain public lands.

**FINANCIAL CONSIDERATIONS** – N/A

**PROPOSED ACTIONS OR MOTION(S)** – N/A

**ATTACHMENTS** – 2025 Ashland Parks and Recreation Division Report

**PREPARED BY:** Lonny Flora, Recreation Supervisor

2025 Ashland Parks and Recreation Division Report Summary

The Recreation Division is responsible for providing recreation opportunities within the City of Ashland. The division works together with the entire APRD team to provide recreational opportunities. This team includes Senior Services, Volunteer programs, and Parks division staff.

This report outlines the accomplishments of the Recreation Division for the 2025 calendar year in areas of Youth & Adult Recreational Programming, Nature Center Programs, Daniel Meyer Memorial Pool & Ashland Rotary Centennial Ice Rink seasonal facilities. Information will also cover results of events held at APRD facilities and rental facilities available to the public. This information does not include data from Senior Services or events organized through the Volunteer Program.

Our Recreation Division team consists of Lonny Flora, Recreation Supervisor, Kirsten Came, Environmental Ed. Coordinator, Volunteer and Event Coordinator, Sulaiman Shelton and Admin Assistants Amber Shroy and Cheryl DeSaram.

**Programming**

Community Programs listed in this section are pre-registered activities that include a fee or are coordinated with partnering instructors hosted by APRD. Registrations are taken in our registration system, as well as drop in registrations taken on-site.

There was a total of 127 programmed activities and events with 2,008 total participants.

<b>Nature Center Programming</b>	<b># of Sessions/Events</b>	<b>2025 Total Participation</b>
Art Classes	3	10
Project Feederwatch	20	39
Monthly Bird Surveys (qty in hours)	21	21



Epic Ashland Concerts	4	Support	6000-8000	Approx. 1500-2000 attendees per concert
All In! Swimming Night	1	Facilitated at Pool	72	Inclusive event designed for people experiencing disabilities and their families. Sponsored by Bridging Communities and Southern Oregon Autism Society
All In! Skating Night	1	Facilitated at Ice Rink	54	Inclusive event designed for people experiencing disabilities and their families. Sponsored by Bridging Communities and Autism Society
Southern Oregon Adult Hockey Association Annual 3v3 Hockey Tournament	1	Facilitated at Ice Rink	60	18 out of town players

### Facilities & Visitor Services

APRD staff handles a wide variety of visitor services including facility booking requests for both public and private events. Approximately 8,000 hours of reserved time was coordinated throughout the parks system by APRD staff. Facilities include picnic areas located in various parks, classroom and gym space at the Grove, Nature Center facilities, ball fields at North Mountain and Hunter Parks, pickleball and tennis courts.

Other services include the David's Chair program in Lithia Park. The reservation of the chair is administered by David's Chair organization and APRD staff coordinate with volunteers to help check out the chair. The chair was reserved 15 times for a total of 30 hours of use in 2025.

Trail services organized by Coordinator Came include interpretive signage in North Mountain Park, printed guides for the Briscoe Geology Park Trail and the new Track Trails program in Lithia Park.

The Daniel Meyer Pool also continues to serve the needs of local athletes by providing a training facility during the school year for local aquatics teams. Rogue Valley Masters, Ashland High School Swim team as well as the Ashland Water Polo team lease the facility in the off-season for training.

### Marketing

The end of 2025 brought a new era of marketing for Ashland Parks and Recreation. The Fall 2025 Community PlayGuide was the final printed recreation guide directly mailed to approximately 12,500 households and businesses in Ashland. The switch to a digital-only format also included transitioning marketing strategies to include regular e-newsletters,

increased social media presence, display ads with partnering organizations and other creative solutions to keep APRD “in view” of Ashland community members.

To prepare for the upcoming transition to a digital-only guide, the internal marketing team organized and distributed the first e-newsletter that was sent out to 5,385 contacts in April of 2025. The CyberImpact e-mail marketing system that was used integrates with our current registration software to easily import user lists to target marketing. In Fall the number of contacts grew to 6,254.

The marketing team implemented another strategy for the first digital-only guide at the end of 2025 for the 2026 Winter-Spring Community PlayGuide. Postcards were designed, printed, and mailed to Ashland households alerting community members about the switch to the digital-only format. The e-newsletter and postcards were identified as effective ways to communicate the digital marketing transition into 2026. Staff will continue to monitor analytics to determine effectiveness of these plans and implement cost-effective strategies to keep APRD relevant in the community.

We have also increased APRD’s social media presence by organizing regular postings that include highlights, programming and events on Instagram and Facebook. Administrative Assistant Amber Shroy is primarily responsible for the design and execution of social media marketing across multiple divisions including posting for Senior Services, volunteer programs, and Parks Division information.

Partnerships have been an important ingredient to effective marketing for APRD. Multiple strategic partnerships managed by staff have allowed the department to leverage resources and increase visibility while saving money. Agreements with local service providers and media outlets have helped improve the effectiveness of our reach in the community.

**Partnerships**

A crucial component to providing successful programs to the community with limited resources is leveraging partnerships. APRD staff have continued to develop and nurture mutually beneficial relationships to help increase service levels in programming and events, effective marketing strategies, and overall usage of the Ashland Parks and Recreation system.

The following list is not comprehensive of all partnerships managed by APRD. This list demonstrates the types of partnerships that help align goals for recreation in Ashland.

<b>Partner Organization</b>	<b>Partner Services Provided to APRD</b>	<b>APRD Service Provided to Partner</b>
Osher Lifelong Learning Institute @ SOU (OLLI)	Display advertising in marketing, classes held in APRD facilities	Marketing in APRD publications, facility space provided
Bridging Communities & Southern Oregon Autism Society	Outreach to targeted communities, event and program facilitation	Facility space provided, advertising, customer service & registration services
Creekside Strings	Events and programs for youth	Facility space provided, advertising, customer service & registration services

Salmon Watch	Event volunteer training	Event coordination and facilitation
Klamath Bird Observatory	Program support	Facilitation and access to volunteers
RV Audubon Society	Program support	Facilitation and access to volunteers
Kids in Parks	Donations and program support for self-guided trails program	Program location facilitation, coordination of materials and program execution
EPIC Ashland	A 501 c3 that provides events in the Ashland Community at low to no cost.	Facilities, On-site event assistance and volunteers
Ashland Folk Collective	A 501 c3 that provides events in the Ashland Community at low to no cost.	Facilities, On-site event assistance and volunteers
DEVO	Teach young people to mountain bike and ride trails safely. Provides volunteer services to parks	Trade advertising and low-cost use of outdoor facilities
Ashland Climate Collaborative	Provided partnership to acquire Pedal Power bikes and trailer for biking programs.	Trade advertising and location to store trailer. Program oversight.
Ashland Tennis & Fitness Club	Provide low cost adult tennis programs to the community and trade advertising Organize Big Al's tennis tournament	Trade advertising and facility use at Hunter Park
United States Tennis Association (USTA)	Provide youth tennis programs to the Ashland Community	Trade advertising and revenue share

The Recreation Division aims to provide high quality recreation services for the Ashland community. While the team is small in numbers, we have identified effective strategies to improve service levels and leverage partnerships to provide more activities and events. This has been accomplished by outreach to the community through marketing and continuing to maintain recreational facilities to operate efficiently.

Questions/Discussion:

- Noted the failure of the ice rink to open in 2025 was a significant loss to the community. Also noted receiving much feedback from the community about last season's reduced hours at the splash pad and pool.
- How is the transition to the all-digital guide going? Are we reaching people? A: The marketing team is tracking results. Hasn't yet been much change in programming participant registrations. Using some of the metrics through email and being able to track click-throughs. Projected a better understanding by 2027. Noted the postcard that was mailed and that for the summer Rec is taking out a full page ad in the Sneak Preview reminding people to go to the website.
- Have people said they missed the old format? A: Yes, mostly from Senior Services patrons. Over the phone, Staff help to get patrons registered.
- How is the online registration system going? A: People are figuring it out.
- What is the cost savings of going digital? A: \$20,000 annually.
- Are there plans for the Nature Center in 2026? A: Facility is open two days a week staffed by volunteers. Coordinator Came is running the Community gardens and setting up environmental education programs with partners. There's a new one in the works with the YMCA.

## **2. Finance Update Q1/Q2 FY26 – Administrative Coordinator Terry**

**SUMMARY** – The Finance Department provides a quarterly review of financial statements. On February 11, 2026, Interim Finance Director Bryn Morrison presented to City Council and Park Commission the preliminary statements ending in Quarter 2 (Q2) of Fiscal Year 2026 (FY26). The Parks and Recreation Department now presents specific Department details for the same period.

The first quarter of FY26 ended on September 30, 2025. Of the \$7,750,540 allocated in General Funds (GF) for FY26, \$1,796,073 or 23.17% of the total had been expended. The second quarter ended on December 31, 2025 with \$3,409,733 in total spent, or 43.99%, with an additional \$162,561 encumbered.

The Parks Capital Improvement (CIP) Fund had a balance of \$3,339,320 at the beginning of the 2025-2027 biennium. At the end of Q1 FY26, the fund stood at \$3,410,268 with Q2 ending with \$3,250,233 and an additional \$116,559 encumbered.

The Parks System Development Charges (SDC) Fund began the 2025-2027 biennium with a balance of \$479,909. At the end of Q1 FY26, the fund stood at \$489,415 and ended Q2 with a balance of \$505,940.

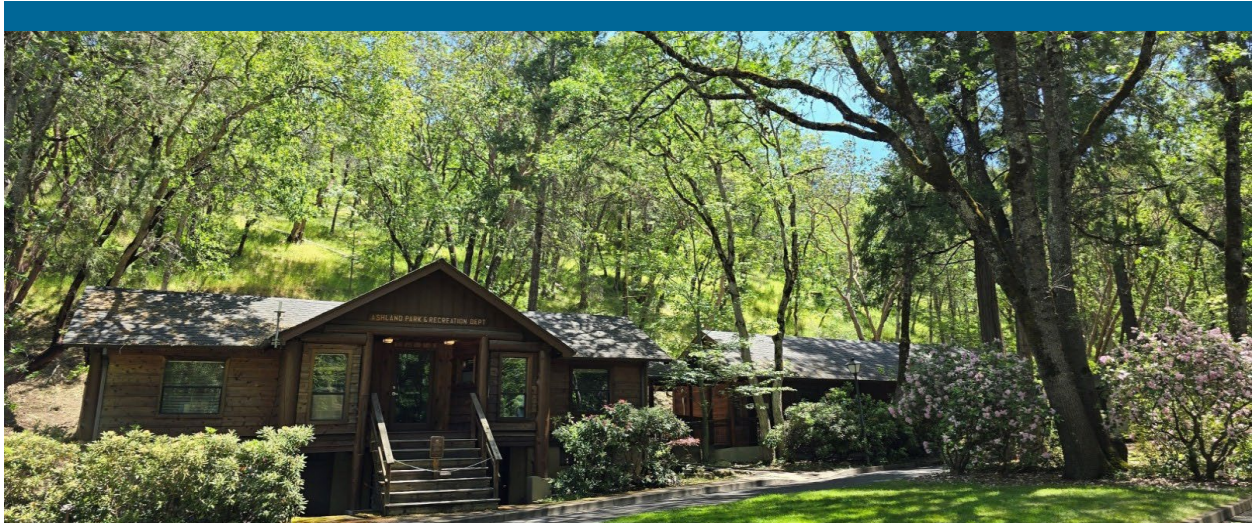
**POLICIES, PLANS & GOALS SUPPORTED** – Goal #1 Best Management Practices

**PROPOSED ACTIONS OR MOTIONS** – N/A

**FINANCIAL CONSIDERATIONS** – N/A

**ATTACHMENTS** – Q1/Q2 FY26 GF Operations Expense/Balance Table

**PREPARED BY** – Brandon Terry, Administrative Coordinator



## Financial Update – Q1/Q2 2026

Park Commission Regular Business Meeting | March 11, 2026

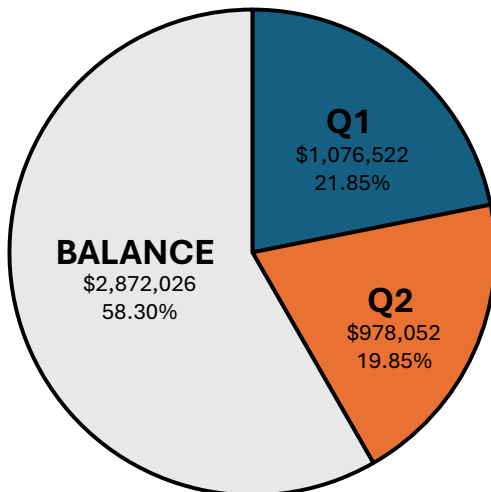


*Better Together*

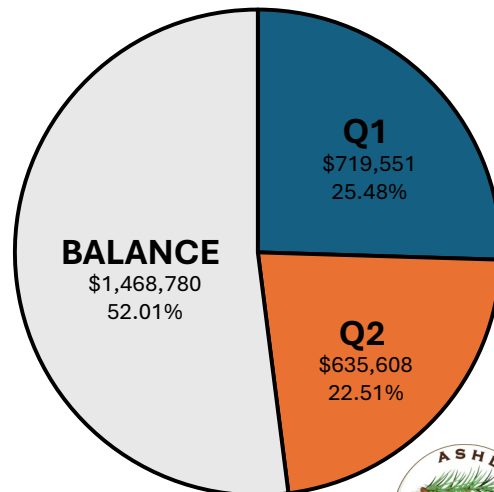


GENERAL FUND

### PERSONNEL

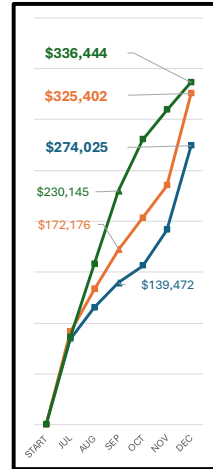
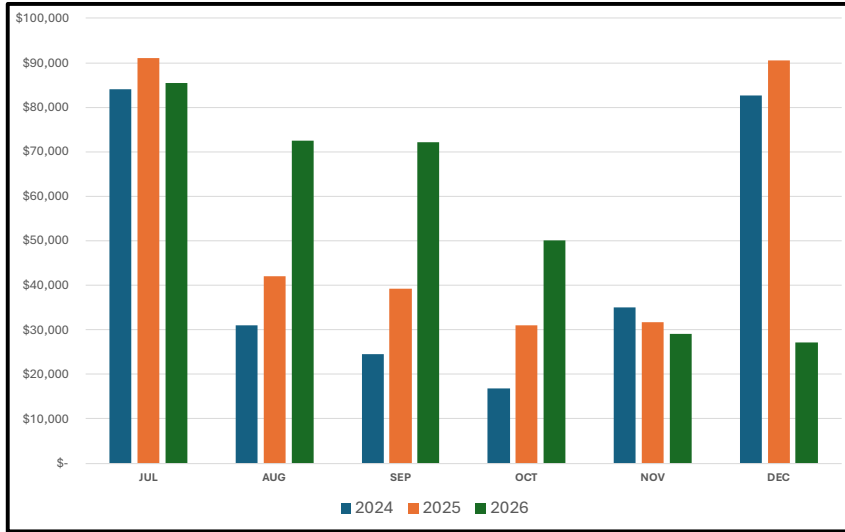


### M/S & CAPITAL



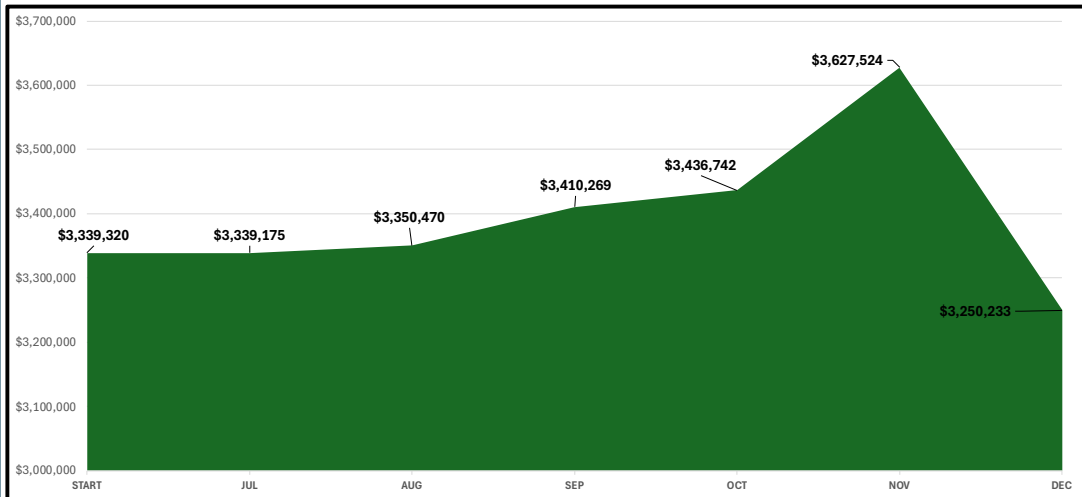
# REVENUE

\*DOES NOT INCLUDE GRANTS & MAINTENANCE AGREEMENTS



9

# CIP



10

Noted revenue is down so far in 2026 because the ice rink did not open. Overall things are good. Spending less on M/S and Personnel and revenue is above where we were last year at this time even without the ice rink revenue.

### Questions/Discussion:

- Drop off (CIP graph) happens every year? A: Yes.

- Golf is the primary reason revenue is up? A: Yes. Will the driving range disaster have an effect? A: Doesn't see that level of break down in golf revenue, but is under the impression that the driving range doesn't make up that much of the revenue at the Golf Course.
- We try to budget what we need and so we like to see our budget get spent.
- We are behind in payroll, and it is hard to make that up. However, here in Ashland we can tap into the personnel budget for M/S. Agree that It would be better to have the personnel we need to deliver services to the City.

### **3. Ice Rink Canopy Update/Discussion** – Acting Director Dials

**SUMMARY** – Staff will give an update on the current state of the Ice Rink cover permitting process.

**PREPARED BY** – Rachel Dials, Acting Director

Parking lot will open this Friday. All paperwork is in to the Planning Department. If all goes as it is currently going should be wrapped up soon. When the cabling parts arrive the installation will require closing the parking lot for one to two weeks. The materials will cost about \$13,000.00 which is budgeted.

Questions/Discussion:

- Okay to open the parking lot now? A: Fire Chief is giving permission for another temporary permit to use the parking lot since the snow season is over.
- We will be spending an additional \$13,000 for the cabling required to keep the cover up year around.

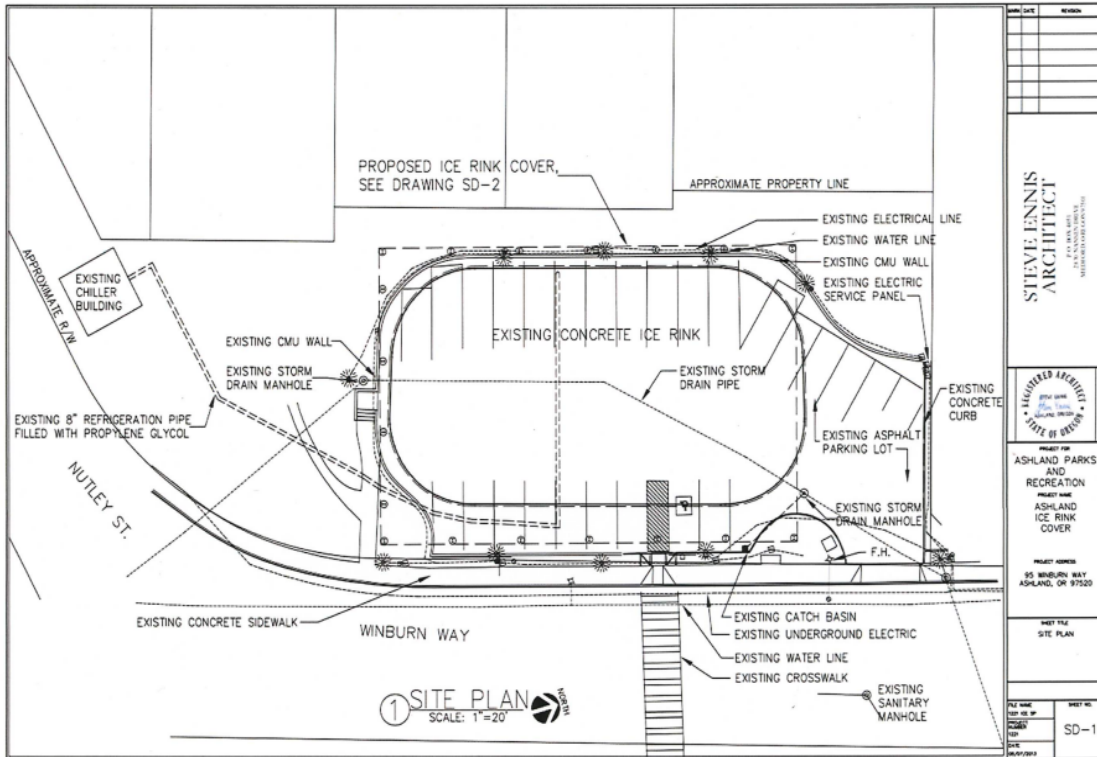
### **4. Ashland Parks Foundation Fundraising Proposal for New Ice Rink Amenities** – APF Board Member Mark Knox

**SUMMARY** – Ashland Parks Foundation Board member Mark Knox will outline the goals, process, and timeline for fundraising for a new ice rink cover and accessory structures.

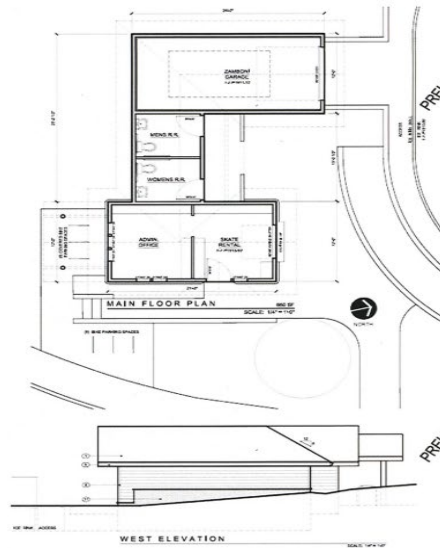
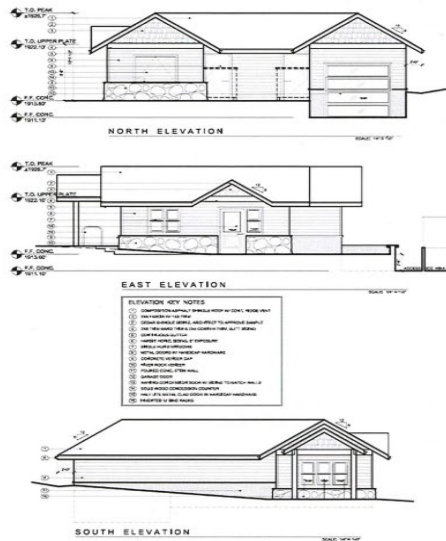
**PREPARED BY** – Rachel Dials, Acting Director

# Lithia Park Ice Rink

2027



5



**PRELIMINARY**

**Carlos Delgado**  
ARCHITECT

**NEW PARKS & REC. BUILDING**

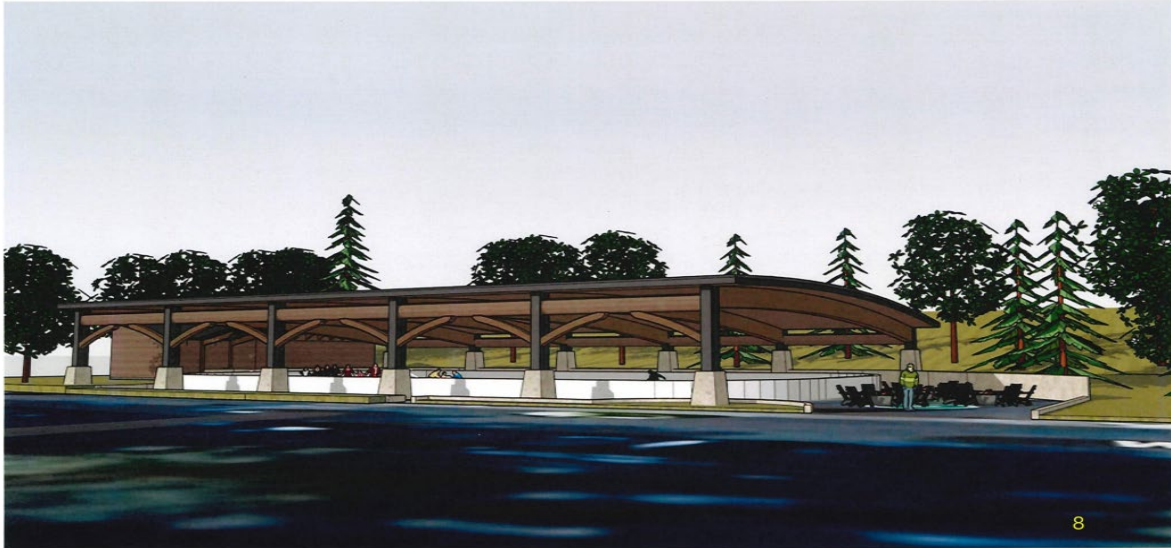
**NOT FOR CONSTRUCTION**

DATE: 02/21/11  
PROJECT: NEW PARKS & REC. BUILDING  
SHEET: A1.1



Initial Vision

By: Mark Schoenleber



**Site Goals & Considerations – Discussed w/ Park Staff 2.26**

**Goals:**

- Ice Rink Cover**
- Snack/Rental building**
- Bathrooms with changing table**
- Zamboni garage**
- Viewer seating area(s)**
- Plaza for assembly space**
- Attractive Landscaping**
- Protective netting**
- Lighting**
- Audio system**
- Lockers**
- Infrastructure coordination\***
- \* For possible phased work**

**Consideration of the following:**

- Controlled entry (ticket sales)**
- Discourage hiding spots**
- Design for bear protective trash cans**
- Design for summer parking**
- Design for summer parking & events**
- Condensation issues**
- Spring afternoon weather and melting**
- Evaluate northwest end for retaining**
- Be aware of massive boulder south end**
- Need for rubber mats**
- Consider space for public art**
- Rink opens October 1<sup>st</sup>**
- Rink closes by March 1<sup>st</sup>**

**Ashland Parks Commission**  
 Mike Gardiner  
 Dan Weiner  
 Jim Bachman  
 Justin Adams  
 Rick Landt

**Ashland Parks Foundation Board**

Mike Gardiner, President  
 Mark Knox, Vice President  
 Pat Acklin  
 Nan Kane  
 Jim Lewis  
 Jeff Mangin  
 Steve Jensen  
 Teresa Fernandez (APF Administrator)

**Lithia Park Ice Rink 2027  
 Steering Committee**

Dave Bernard  
 Bill Molnar  
 Mike Gardiner  
 Eric Monroe  
 Steve Jensen  
 Mark Knox

**Tentative Timeframe Goals**

***dependent on fundraising and public hearing process \****

Programming & Schematic Design (for all structures):	Apr – May 2026
Design Development for Planning submittals:	Jun 2026
APRC Approval Authority to submit:	June 2026
Design Development and Construction Documents:	Jun - Nov 2026
Project Bidding:	Oct – Nov 2026
Building permit submittal:	Jan 2027
Construction start:	Mar 2027*
Construction completion:	October 2027*

**Mark Knox, Vice President Ashland Parks Foundation:** Lives in Ashland. Was a planner for the City of Ashland. Also worked as a consultant and was part owner of KDA Homes. In retirement he serves on boards.

The ice rink cover project has grown legs in backroom conversations. Was surprised that the cover became a permanent structure. We can do better. Significant pledging occurring through the Foundation for a permanent structure with snack shack, Zamboni garage, restroom, covered seating, fire pits, etc.

Having conversations with the neighbors, talking with local architects and landscape design architect(s). Page six of the handout is a drawing from 2011 of a building that was going to be a restaurant. The drawing has some of the suggested amenities. The project fell through but the drawing can be useful as a starting point. The idea is to use the land at the south end of the lot by the chiller for the building.

The idea is NOT to shut down the parking lot in the future. Effort would be made to create a multipurpose facility. Also make it attractive for neighbors, in earth tones, pulling in effects from Lithia Park, making use of some of the wasted space near the bollards at the parking lot entrance. Met with staff for their feedback.

Looking at fundraising, public hearing process, creating an adaptable masterplan. Could be phased if finances require that. Looking for an inexpensive route. They have already created a steering committee. No female on the committee list because the female they chose is probably going to be the landscape architect.

Looking at the close of next season (2027) for getting started. If not ready, can push it out another year.

Questions/Discussion:

- During the tear down of the old cover and the construction of the new cover/amenities there would be no use of the site? A: Correct. No parking, that sort of thing.
- What's the budget? A: In the early millions. Hesitant to say as materials tend to get more expensive.
- And no cost to the City? A: Might ask the city to take down the current cover.

Knox: Will come back to the Commission for final approval of relatively complete plans (not just construction drawings). Will ask for an agreement that the Commission will commit to allow the foundation to move forward with the contracts.

- This mirrors what we are doing with the Butler-Perozzi Fountain. A: Yes.

- Zahran: An example of how the Commission needs to work with the City. That's the one thing I want to think about going forward.

**5. Hunter Park Tennis Court Project Update – Acting Director Dials**

HUNTER PARK TENNIS COURTS UPDATE



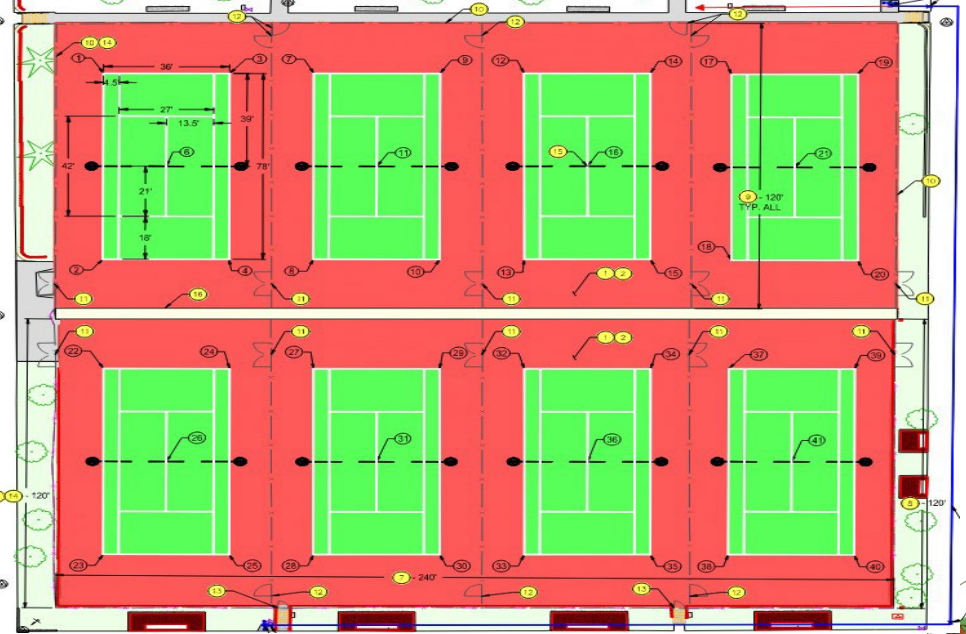
**Hunter Park Tennis Courts Update**


Park Commission Regular Business Meeting | March 11, 2026



13

HUNTER PARK TENNIS COURTS UPDATE





14



## Current Project Plans

- **Activities:** All tennis with one multi-use court (#5) for Bike Polo and futsal. (no plans for pickleball)
- **Surfacing:** full asphalt and concrete resurfacing
- **Utilities:** Installation of a new water line , drinking fountains
- **Fencing:** perimeter fencing & interior fencing
- **Structural:** new siding/paint on hitting wall



15



## Estimated Timeline

- **Bid Solicitation:** May/June 2026
- **Contract Award:** June-July
- **Construction:** August-Oct/Nov 2026
- Courts will be unavailable during construction



16

**SUMMARY** - In 2024, APRD secured a matching grant from the Oregon Parks and Recreation Department (OPRD) to rehabilitate the Hunter Park Tennis Courts. As the project nears the bidding phase, staff are seeking feedback on proposed amendments to the original design to better align with current multi-sport demand and regional participation trends.

### Current Project Scope & Timeline

The approved grant plan includes the rehabilitation of eight tennis courts, featuring one multi-use court for bike polo and futsal. Any changes to this scope require a public process, and submission of changes to OPRD.

**Infrastructure Improvements:**

- **Surfacing:** Full asphalt and concrete resurfacing.
- **Utilities:** Installation of a new water line and drinking fountain.
- **Fencing:** New black vinyl fencing (4' interior/10' exterior).
- **Structural:** New siding for the plywood center wall.

**Proposed Timeline (2026):**

- **Bid Solicitation:** May – June
- **Contract Award:** June – July
- **Construction:** August – October
- **Deadline:** December 31, 2026 (Grant Requirement)

**Data and Market Trends:**

Recent data from the 2025 PROS Plan surveys and national trends suggest a high demand for diversified court access, particularly pickleball.

From [PROS Plan Public Survey #1Q](#): Did you participate in any of the following outdoor sporting activities in Ashland during the past 12 months?

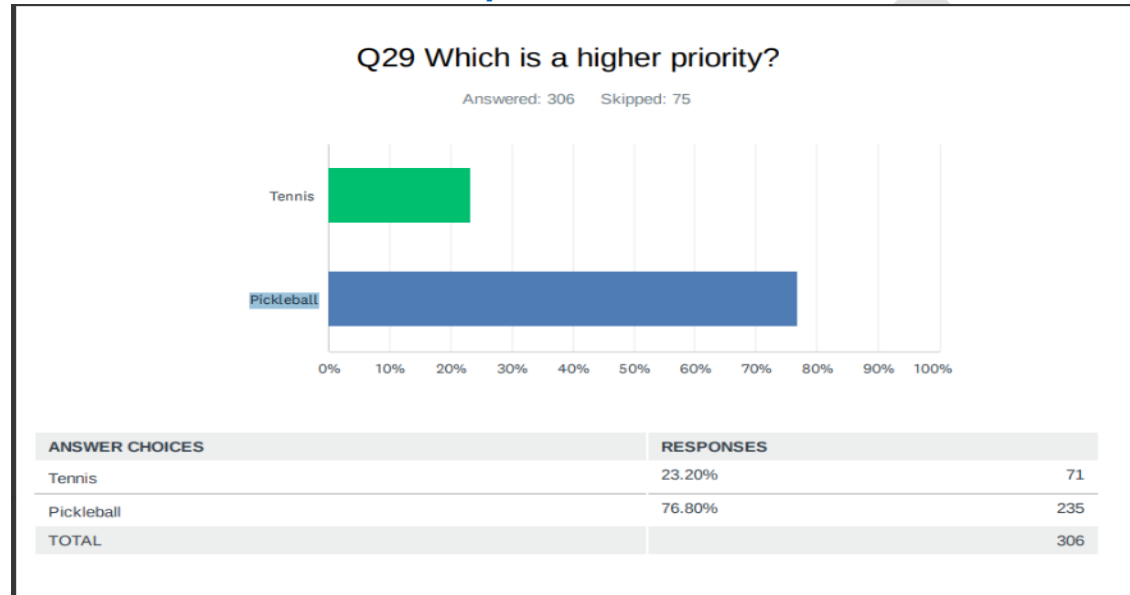
Parks, Recreation, Open Spaces & Senior Services Strategic Plan (PROS): Community Survey

ANSWER CHOICES	RESPONSES
Picnicking	44.09% 306
Taking children or grandchildren to a playground	41.35% 287
Nature immersion (e.g. relaxing, hanging out, escaping heat or noise)	75.65% 525
Going to dog parks or off-leash areas	29.39% 204
Attending outdoor concerts, fairs, or festivals	69.88% 485
Golfing	11.53% 80
Tennis (played outdoors)	14.99% 104
Pickleball (played outdoors)	29.54% 205
Outdoor court games other than tennis/pickleball (e.g. basketball, badminton, futsal, beach volleyball)	12.10% 84
Field Sports (e.g. soccer, softball, baseball, football, ultimate frisbee, disc-golf, lacrosse)	26.37% 183
Visiting historic sites or history-themed parks (e.g. history orientated museums, outdoor displays, visitor centers)	20.75% 144
Other (please specify) If selected text box must be filled in	13.11% 91
Total Respondents: 694	

Q: Do you agree with the following?

- Ashland needs more pickleball courts: 32% agree, 39% disagree
- Ashland needs more tennis courts: 17% agree, 45% disagree

**From the [PROS Plan Values Survey](#):**



**General Pickleball and Tennis Data**

**Tennis Growth:** National participation hit a record 27.3 million in 2025. Locally, tennis remains a high-value activity for Ashland residents.

**Pickleball Expansion:** Now a mainstream sport with 22.7 million active players, the demographic has shifted younger, with an average age of 34.8.

**Municipal Shift:** Leading municipal projects in 2026 are moving away from single-sport sites in favor of multi-sport facilities to maximize tax-payer return on investment and facility utility.



## Project funding & estimated budget

- 60% of funds are from OPRD grant-\$720k max
- 40% of funds are from Parks CIP budget-\$480k max
- Engineers estimate(done 1 year ago) -\$971,000
- Grant deadline for project completion -12/31/26



### Proposed Project Amendments:

To ensure the Hunter Park facility remains versatile and serves the broadest range of residents, staff recommend the following changes to the project for discussion:

1. **Expanded Pickleball Access:** Add additional striping to Court 5 (the multi-purpose court) to accommodate four pickleball courts.
2. **Universal Net Versatility:** Upgrade all courts to include removable tennis nets. This allows the entire facility to be cleared for major special events, tournaments, or alternative recreational uses.

### Recommended Discussion Questions

- Is the Park Commission interested in integrating pickleball courts at Hunter Park?
- Is the Park Commission interested in increasing the “use flexibility” on all courts?

**POLICIES, PLANS & GOALS SUPPORTED** – PROS Plan Survey Data and Meeting Summary’s Parks Capital Improvement Project and workplan

**FINANCIAL CONSIDERATIONS** – This project is approved for grant funding through OPRD. \$720,000(60%) grant, \$480,000(40%) from Parks CIP, for\$1,200,000 total project cost. These proposed amendments are not expected to impact the approved budget.

**PROPOSED ACTIONS OR MOTION(S)** – No action. Recommendation to bring this item back for discussion and vote at the next Regular meeting, April 8, 2026

**ATTACHMENTS** – Hunter Park Tennis Court Grant, Sept 24, 2025, Hunter Park Tennis Court Project Public Meeting summary (See packet)

**PREPARED BY** – Rachel Dials, Acting Director

**PUBLIC FORUM** –

Rick Vann, Ashland: Spoke to the extreme value of Pickleball. Demand for courts is outstripping supply. True locally beginning in May. Need more dedicated pickleball courts. Want to be good neighbors, acknowledge the noise issue.

Dave Owen, Ashland: Universal net versatility is crucial. Additional striping of one court is not enough. A minimum of two preferably four courts need to be striped for pickleball. People are already waiting to play pickleball now during the off season. People need to learn to get their minds around playing on dual stiped courts.

Jane Ferguson, Ashland: Representing the Hunter Park Tennis Association. About 100 members. Recalled that it was said at a previous meeting that geographically there are enough pickleball and tennis courts in town. Eight for pickleball and 7.5 for tennis. Skeptical that the universal nets will work. Would like to keep Hunter Courts for tennis only.

Pat Schoreder, Ashland: Came to town for the tennis. Tennis is the game of life. ESPN and USTA say that tennis is growing. Double striping for pickleball would make courts unusable for sanctioned tennis matches. There is a need for more pickleball courts just build them somewhere else.

Daryl Witmore, Jacksonville: Represents Rogue Valley Bike Polo. Appreciates the generosity and cooperation of staff in having court five to use. Hosting their seventh tourney this year. They take excellent care of the court. Encourages the multi-use nature of the courts. Could expand their program and would love to have two courts to use for tournaments, etc. Bike polo has an international following.

Dave Ferguson, Ashland: Happy to move to Ashland ten years ago due to the town's assests and especially the tennis courts. Those tennis assests are decreasing especially with the deterioration of the courts at Hunter. The cracks present a safety issue. Here as the Hunter Park Tennis Association to advocate for protecting their assets.

Denise Daehler, Ashland: Hunter serves a different community in Ashland – different socio economic community. Serves students from the grade school, middle school, and SOU. People are trying to play pickleball on tennis courts. Sunnier at Hunter in the winter, too icy and cold at Lithia Park in the winter. South side of Ashland has no free pickleball courts.

Dale Rooklyn, Ashland: Here to speak in support of pickleball and tennis. Need more and/or better tennis courts and more pickleball courts.

Questions/Discussion:

- Pickleball is a growing, social sport, need more courts for tournament play. Expanded hours also wanted. Hunter park is lighted later than Lithia. Lights impact wildlife. Not having the Lithia courts lighted over the past winter has had a positive impact on the wildlife there.
- Tennis is a longstanding popular sport. Pickleball is a noise nuisance for tennis players. Tennis has lost access in town. Park goers don't want to listen to pickleball and have nowhere to park when they visit Madrone Grove. Noise pollution for all the Lithia Park neighbors and the Japanese Garden. Lithia is an inappropriate place for pickleball.
- Possible solution: Convert two tennis courts at Hunter Park to pickleball for a total of eight dedicated courts. Double stripe an additional court for tennis/pickleball totaling twelve for pickleball. Keep the multi-use court for bike polo. Leaving four dedicated tennis courts at Hunter. Install fitments for pickleball nets and establish rules around which sports could be played when. Then convert pickleball courts in Lithia back to tennis.
- Would the Hunter grant have to be rewritten if we add pickleball lines? A: No, it would just require an amendment and evidence of public meeting process.
- Would capping pickleball net post holes make the courts unplayable for sanctioned tennis? A: Yes. Lines are okay via the Ashland High School tennis coach.
- A tennis expert said that double striping courts is an issue for tennis games as is any other alteration including noise. Need dedicated courts for both sports.
- Is proposed timeline for Hunter project realistic? A: Yes
- History of double lined courts in Lithia? A: 2020, 2021 courts in Lithia were shared. Tennis and pickleball players were unhappy.
- Were the conflicts more physical or social? A: More social than physical.
- OSAA allows local small tournament play on dual striped courts but would not allow state level tournaments. Same with the USTA.
- Request to bring the item to the next study session for full discussion.
- Goal to have the project out to bid by May.
- Request to Commissioner Weiner to put his proposal in writing.
- Noted that changing everything as suggested by Weiner would be costly and disruptive. Not in favor. In the current plans, striping one court for pickleball would be easily accommodated.
- Comment that Weiner's proposal is good for the long term issue of racquet sports.
- Request for staff to bring pros and cons and two to four options to the study session.
- That's a short turnaround for collecting costs. Staff's recommendation is to stripe one court for pickleball at Hunter.

- Previous director said that adding lines is quick and cheap. Impassioned plea to correct the harm that has been done by having pickleball in Lithia park.

**VIII. DIRECTORS REPORT – Acting Director Dials**

- Parks staff has shifted hours for the time change for spring. Staff are now on the clock until 9:00 PM with bathrooms closing later in the evening. General parks staff hours are 6:30 AM – 4:00 PM. Facilities staff coverage is from 6:30 AM – 9:00 PM.
- Park Tech 1 and Rec Coordinator positions are in background check.
- The request for proposals is out for food and beverage service at the Oak Knoll Golf course with a deadline to return proposals by March 26.
- The Lithia Artisans Market starts this weekend and all restaurants with approved contracts have begun using space on Calle Guanajuato.

**IX. ITEMS FROM COMMISSIONERS/STAFF**

a. Liaison Report

**Gardiner:** Public Arts Advisory Committee – Micah Blacklight has started the Crystalizing Our Call sculpture. When finished the larger than life sculpture will be placed in Ashland Creek Park in the rain garden area.

**Gardiner:** Ashland Parks Foundation – On the cusp of starting the Butler-Perozzi fountain project. Waiting for permission to proceed.

**X. UPCOMING MEETING DATES**

1. Park Commission Study Session April 1, 2026
2. Park Commission Regular Business Meeting April 8, 2026
3. Ashland Senior Advisory Committee April 13, 2026
4. Recreation Division Advisory Committee April 16, 2026

**XI. ADJOURNMENT – Chair Bachman adjourned the meeting at 6:55 PM.**

Respectfully submitted by Nancy A. Mero, Executive Assistant



## REGULAR BUSINESS MEETING AGENDA BRIEF

**April 8, 2026**

<b>Agenda Item</b>	VIII. Hunter Park Tennis Courts Project	
<b>Presenter</b>	Rachel Dials	Acting Director
<b>Item Type</b>	Action <input checked="" type="checkbox"/> Information <input type="checkbox"/>	

**SUMMARY**

In 2024, the Ashland Parks and Recreation Department (APRD) secured a matching grant from the Oregon Parks and Recreation Department (OPRD) to rehabilitate the Hunter Park Tennis Courts. The approved grant scope includes the rehabilitation of eight tennis courts, including one multi-use court designated for bike polo and futsal. Because any deviation from this scope requires a public process and a formal amendment submission to OPRD, staff are seeking a final decision from the Park Commission (PC).

At the April 1, 2026, study session staff presented three options. The PC directed staff to bring these options to the April 8, 2026, regular meeting for discussion and action.

The three options are:

Option	Description	Key Features
<b>Option 1</b>	<b>No Change</b>	Maintain original grant submittal: <b>8 tennis courts</b> . Court #5 remains multi-use (bike polo/futsal).
<b>Option 2</b>	<b>Limited Expansion of Pickleball</b>	<b>8 Tennis Courts (1 shared)</b> . Court #5 dual-lined for 4 pickleball courts. Includes removable nets for courts #5-8.
<b>Option 3</b>	<b>Significant Expansion of Pickleball</b>	<b>8 Tennis Courts (2-4 shared)</b> . Courts #5-8 dual-lined for up to 16 pickleball courts. All back courts utilize removable nets.

**Proposed Management & Shared Use Plan:** If dual striping is implemented, staff recommend the following operational guidelines:

- **Reservations:** Non-net programs (futsal and bike polo) must be reserved through the APRD office; signage will indicate reserved times. This operational plan is currently in place.
- **Priority Play:** Outside of reservations, play is first-come, first-served.
- **Seasonal Exceptions:** During High School Tennis Season from March to early June (3 PM to 6 PM) and during permitted tournaments, all eight courts will be reserved exclusively for tennis.

Over the past month, the PC heard from around 150 tennis and pickleball players by email and in person who are passionate about their sports. Some of the common themes heard are:

- Keep tennis and pickleball separate. Keep Hunter Park for tennis only.
- Keep pickleball in Lithia Park.
- Convert some courts in Hunter Park to shared use with dual lines for pickleball and tennis.

With financial resources stretched and no current plans for adding courts to the parks system staff recommends Option #2, a limited expansion of Pickleball at the Hunter Park tennis courts.

### **POLICIES, PLANS & GOALS SUPPORTED**

Parks Capital Improvement Project and workplan

### **FINANCIAL CONSIDERATIONS**

This project is approved for grant funding through OPRD. \$720,000 (60%) grant, \$480,000(40%) from Parks CIP, for \$1,200,000 total project cost. These proposed amendments to add pickleball lines would have little impact on the approved budget. \$800-\$1000 per court additional cost.

### **PROPOSED ACTIONS OR MOTION(S)**

Move to approve Option #1, #2 or #3

### **ATTACHMENTS**

None

**PREPARED BY** Rachel Dials, Acting Director